


The Siemens logo is displayed in a white rectangular box at the top left of the page. The word "SIEMENS" is written in a bold, teal, sans-serif font. Below the logo box, there is a thin white horizontal line.

**SIEMENS**

The background of the advertisement is a photograph of an offshore wind farm. A large, three-bladed wind turbine is the central focus, with its tower extending from the water. The blades are a light blue color. In the distance, several other similar turbines are visible on the horizon. The sky is a clear, light blue with some light clouds. The water is a deep greenish-blue with small waves.

**The world of tomorrow  
needs answers that last.**

[siemens.com/answers](https://www.siemens.com/answers)

## Fast Facts



SIEMENS

A team of 60,000 aiming  
for the same goal.

### Energy

- Our power generation solutions help meet one-third of America's total energy needs every day.
- Our energy management systems help to ensure the continuous reliability of one-third of America's transmission grid.
- Our high voltage systems helped U.S. utilities increase capacity on existing transmission lines by up to 24%.
- We are one of America's leading providers of equipment for wind and solar power and a leading provider of solutions to help reduce industrial CO<sub>2</sub> emissions.



### **Healthcare**

- We are the number one application service provider in the U.S., processing over 220 million transactions daily.
- We have more than 900 clinical diagnostic tests to help improve the quality of patient care.
- Our products are found in 8 out of 10 hospitals in the U.S.

### **Industry**

- We are the number one provider of light rail vehicles in North America.
- Our building automation, fire safety and security solutions improve more than 35,000 North American facilities.
- We process 90% of the mail for the U.S. Postal Service.
- We purify one in 10 glasses of water Americans drink every day.
- SYLVANIA is the number one lighting services company in the U.S.

# Table of Contents

<b>Siemens Overview</b>	<b>4</b>
<b>Proud to be Siemens</b>	<b>5</b>
<b>Sustainability</b>	<b>6</b>
<b>Dare to Ask</b>	<b>8</b>
<b>Corporate Responsibility</b>	<b>10</b>
<b>Siemens-Disney Alliance</b>	<b>12</b>
Siemens Capital Company LLC	26
Siemens Corporation	20
Siemens Energy, Inc.	23
Siemens Financial Services, Inc.	26
Siemens Foundation	27
Siemens Government Services, Inc.	28
Siemens Healthcare Diagnostics Inc.	29
Siemens Hearing Instruments, Inc.	30
Siemens Industry, Inc.	31
Siemens Medical Solutions USA, Inc.	36
Siemens PLM Software, Inc.	39
OSRAM SYLVANIA Inc.	41



*“What each of the employees of Siemens are involved with, is helping stake America’s claim on a clean energy future. This is what’s possible in a clean energy economy, and while it may not feel like it every day when you punch in, all the folks who work here at Siemens, I want you to understand, you are making it possible, you are blazing a trail. You are showing America our future.”*

— PRESIDENT OBAMA

[usa.siemens.com](http://usa.siemens.com)

[siemens.com/energy](http://siemens.com/energy)

[usa.siemens.com/finance](http://usa.siemens.com/finance)

[siemens-foundation.org](http://siemens-foundation.org)

[siemensgovt.com](http://siemensgovt.com)

[usa.siemens.com/diagnostics](http://usa.siemens.com/diagnostics)

[usa.siemens.com/hearing](http://usa.siemens.com/hearing)

[usa.siemens.com/industry](http://usa.siemens.com/industry)

[usa.siemens.com/healthcare](http://usa.siemens.com/healthcare)

[siemens.com/plm](http://siemens.com/plm)

[sylvania.com](http://sylvania.com)

# Siemens Overview

FY 2010

Visit Siemens USA on Facebook:  
[facebook.com/siemensusa](https://www.facebook.com/siemensusa)



*“Our company was founded on innovation, and it’s remained the lifeblood of our business. We can afford to innovate and grow because of our tremendous financial strength. In fact, if Siemens USA were a stand-alone company, we’d be ranked in the top 120 of the latest list of Fortune 500 companies. Couple that with global operations in 190 countries, and you can see why we have the diversity and the staying power that’s reassuring to our customers... our suppliers...and our shareholders.”*

— ERIC SPIEGEL  
President & CEO  
Siemens Corporation and U.S. Cluster

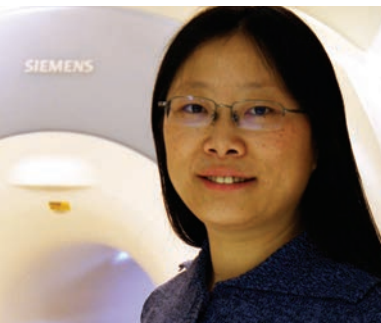
Siemens AG is a \$102.9 billion company employing 405,000 people throughout 190 countries. Headquartered in Munich, Germany, the company ranks first in sales among the world’s leading electronics and electrical equipment companies<sup>1</sup>, sixth as the most admired electrical engineering company in the world<sup>2</sup> and 40th in revenues.

Siemens in the U.S. is a \$19.9 billion company that provides a broad range of products and services to improve the way we live and work. Markets include automation & control, building technologies, energy & power, financial services, healthcare, hearing solutions, industrial solutions, lighting, transportation, and water technologies. Siemens in the U.S. employs approximately 60,000 people in nearly 800 locations throughout all 50 states and Puerto Rico. In fiscal 2010, 7,000 employees and \$1.3 billion were dedicated exclusively to Research and Development (R&D) in the U.S. Overseas, we exported \$2.0 billion in innovations to help America maintain its competitive edge in the global marketplace.

<sup>1</sup> FORTUNE Magazine, <http://money.cnn.com/magazines/fortune/global500/2010>

<sup>2</sup> FORTUNE Magazine, <http://money.cnn.com/magazines/fortune/mostadmired/2010>

## Proud to be Siemens



*"I'm proud to be part of Siemens as it provides me a unique opportunity to learn and grow every day in my career, no matter by a small step or a big stride."*

Li Pan  
Baltimore, MD



*"What I like the most about working for Siemens is the potential to make a difference — a really big difference."*

Dave Turner  
Colorado Springs, CO



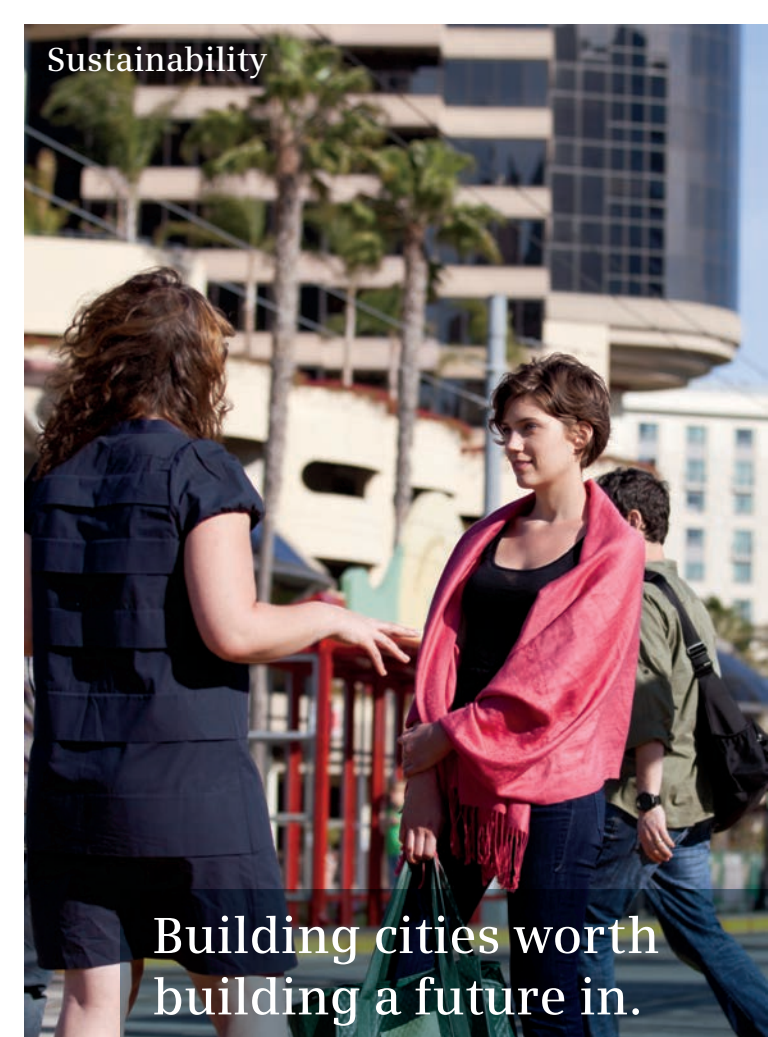
*"Siemens' pursuit of innovation and excellence is evidence of its commitment to making a significant contribution to the world."*

Darien Palmer  
Malvern, PA



*"Knowing Siemens values are in line with my passion for exemplary customer service and support provides great personal and professional satisfaction to me."*

Adam Sears  
Seattle, WA



Sustainability

## Building cities worth building a future in.

Today, more than half the people on earth live in cities. In the coming years this number will continue to grow. These people are drawn by opportunity. By businesses that create new jobs and fresh ideas. By the promise of a lasting quality of life. They seek these things out not only for themselves, but for future generations as well. So our challenge is to build cities worthy of this ambition.

And much of the infrastructure that weaves these cities together comes from Siemens. Water treatment. Mobility. Building technologies. Renewable energy. No other company offers so many answers for cities.



We're building cities today that will be even better tomorrow. We're building cities where livability, prosperity and environmental responsibility are all interconnected. Where each leads to and strengthens the others.

We're building cities all over the world where people and businesses can thrive for years to come.

A photograph of three business professionals standing in an office with a large window overlooking a city skyline. On the left is a man with a mustache wearing a dark pinstriped suit and a light blue tie. In the center is a man with glasses wearing a white button-down shirt. On the right is a woman with short brown hair wearing a dark blazer over a patterned top. The scene is brightly lit, suggesting daytime.

Dare to Ask

There can be no answers  
without people who ask  
questions.

Siemens has ignited revolutions in industry, energy and healthcare—all because of 405,000 people worldwide who dare to ask big questions every day.

We are a fully integrated technology company actively operating in more than 190 countries. We're the global market leader in many fields, offering a wide range of pioneering products for energy efficiency, industrial productivity, affordable healthcare and intelligent infrastructure, with a growing focus on sustainability. Our environmental portfolio is already the most comprehensive in the world.



To find answers to the toughest questions of our time, we need people who dare to ask them. Open-minded, curious people who have a thorough understanding of the world we live in. Dedicated people who are determined to find answers. People who want to make a difference. Just like the more than 405,000 people of Siemens. And, maybe, just like you.

## Corporate Responsibility



Our corporate culture reaches beyond the office walls.

Education has always been a priority at Siemens in the U.S. and across the globe, especially in the areas of Science, Technology, Engineering and Mathematics (STEM).

The Siemens Foundation, an independent, not-for-profit organization recognized under Section 501(c)(3) of the Internal Revenue Code, is supported in large part by contributions from the Siemens U.S. sectors. The Siemens Foundation provides more than \$7 million annually in support of STEM educational initiatives in the U.S. Its signature programs, the Siemens Competition in Math, Science and Technology and Siemens Awards for Advanced Placement, reward exceptional achievement in science, math and technology.



Visit Siemens Caring Hands on Facebook:  
[facebook.com/siemenscaringhands](https://facebook.com/siemenscaringhands)

Visit Siemens Foundation on Facebook:  
[facebook.com/siemensfoundation](https://facebook.com/siemensfoundation)



The Siemens Caring Hands Foundation (SCHF) is a not-for-profit organization that is an independent, public charity recognized under Section 501(c)(3) of the Internal Revenue Code. The SCHF was established to receive, manage and allocate funds for charitable activities. Siemens Caring Hands (a division of Siemens Corporation distinct from the SCHF) encourages volunteerism by providing organizational assistance and resources for Siemens employees to help them make a difference in their local communities.

Siemens works to ensure that its activities, processes and products adhere to the strictest standards of environmental safety and are compatible with sustainable development goals.

## Siemens-Disney Alliance

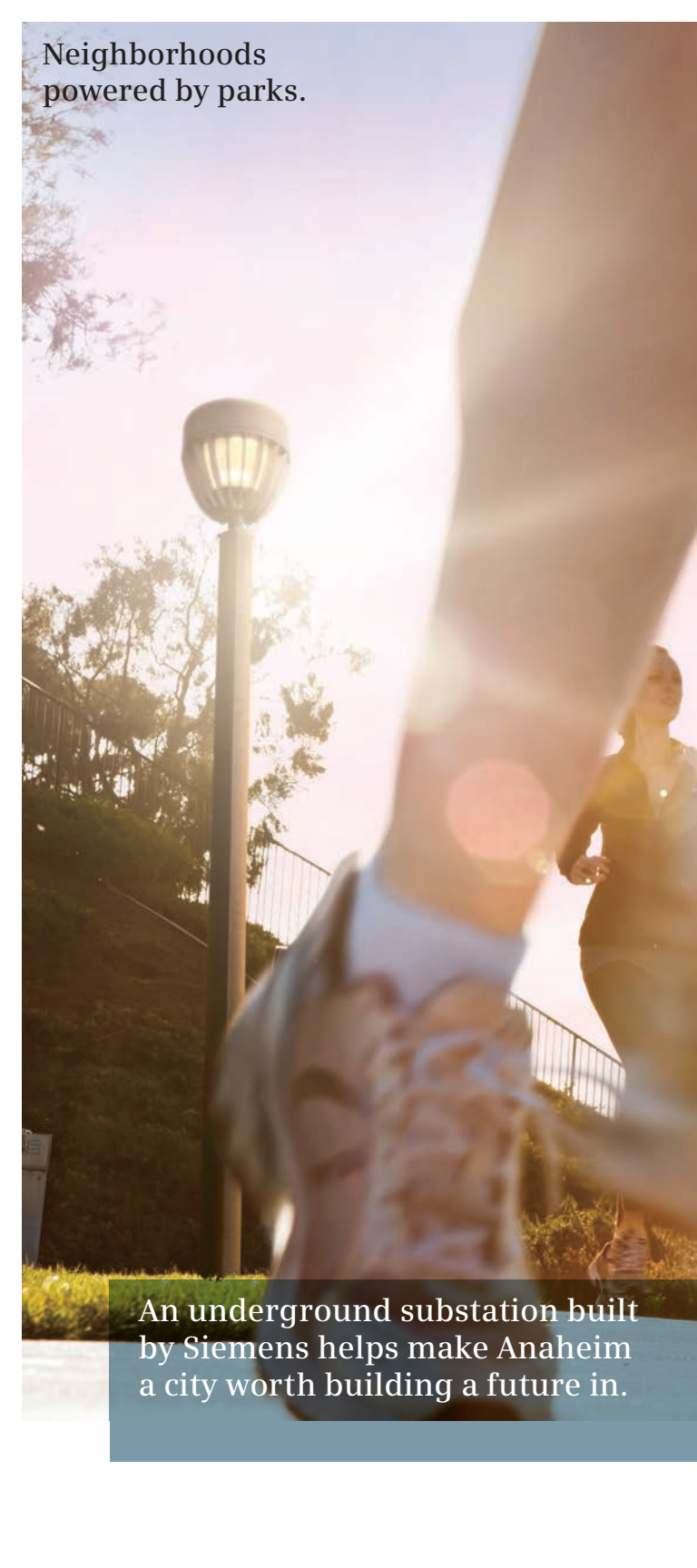


# Innovating marketing and technology alliances.

The Siemens-Disney Alliance brings together the world's leading family entertainment company and a premier global technology and infrastructure company in a 12-year strategic technology and marketing alliance that was announced in November 2005. While Walt Disney Parks and Resorts used a range of Siemens products and technologies before the alliance agreement, the sponsorship program expanded the relationship and paved the way for the two companies to broaden their technical collaborations across several platforms — including theme parks, resorts, cruise ships and other lines of business.



As part of the alliance, Siemens sponsors attractions at Walt Disney World Resort (FL), Spaceship Earth and the adjoining Project Tomorrow post show. Other assets sponsored by Siemens include IllumiNations: Reflections of Earth (Epcot), Osborne Family Spectacle of Dancing Lights at Disney's Hollywood Studios (FL), a technology showcase at Innoventions (CA) and It's a Small World (CA). The alliance sponsorship also extends to New York City with the Siemens sponsorship of the ABC Studio digital sign, located in the heart of Times Square.

A woman in athletic wear is running on a path in a park during sunset. The scene is bathed in warm, golden light. In the foreground, a street lamp with a spherical globe is visible, and a person's leg in a white sock and sneaker is partially in view, suggesting the runner is being followed. The background shows trees and a fence.

Neighborhoods  
powered by parks.

An underground substation built  
by Siemens helps make Anaheim  
a city worth building a future in.



## Energy

---

Energy Service

---

Fossil Power Generation

---

Oil & Gas

---

Power Distribution


---

Power Transmission

---

Renewable Energy

Small cells don't have  
to lead to big problems.

A photograph of a patient lying on a Siemens medical scanner table. The patient is wearing a blue and white striped hospital gown and has their head resting on a blue pillow. The scanner table is white and blue, and the patient is positioned inside the circular gantry of the scanner. The background is a bright, clinical setting.

Siemens answers help doctors  
detect diseases earlier, saving  
costs and extending lives.



## Healthcare

---

Diagnostics

---

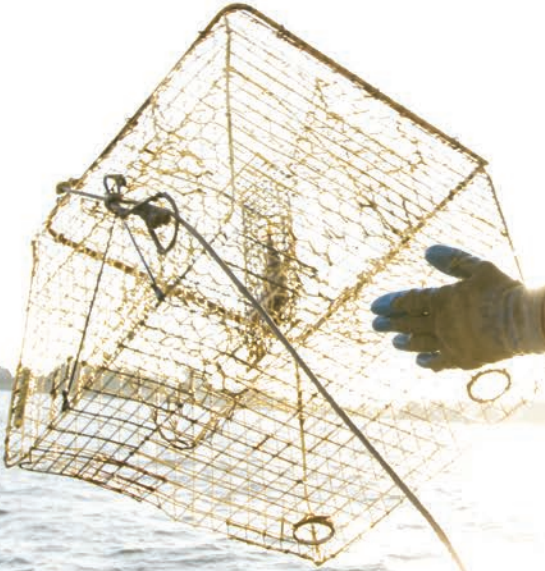
Imaging & IT

---

Workflow & Solutions

---

Life returns to  
waterways.



Siemens answers help protect  
vital waters for future generations.



## Industry

Building Technologies

Drive Technologies

Industry Automation

Industry Solutions

Mobility

OSRAM

PLM Software



Somewhere in America,  
you'll find Siemens.

**Directory**

# Siemens Corporation

## Headquarters

300 New Jersey Avenue, NW  
Suite 1000  
Washington, DC 20001-2268

Tel: (202) 434-4800  
Fax: (202) 434-4839

## Corporate Offices

170 Wood Avenue South  
Iselin, NJ 08830-2726

Tel: (732) 321-3100

527 Madison Avenue  
8th Floor  
New York, NY 10022-4376

Tel: (800) SIEMENS

## Siemens-Disney Alliance

Siemens VIP Center, Epcot  
P.O. Box 10,000  
Lake Buena Vista, FL 32830

Tel: (866) 9-BASE21  
Fax: (407) 560-8015

## Cross-Sector

[usa.siemens.com](http://usa.siemens.com)

Siemens Corporation serves as the holding company for the Siemens sectors — Industry, Healthcare and Energy — their divisions and other independent legal entities in the U.S. It provides essential services to better enable responsible, profitable growth and uniformly represents the diverse Siemens businesses to the external market.

### Location

#### Siemens Corporation

170 Wood Avenue  
Iselin, NJ 08830-2726  
Tel: (732) 321-3100

527 Madison Avenue  
8th Floor  
New York, NY 10022-4376  
Tel: (800) SIEMENS

### Summary

- Accounting and reporting
- Audit (financial and operational)
- Corporate marketing and communications
- Corporate research
- Corporate tax
- Cross-sector sales and marketing
- Event management
- Export control and customs
- Government affairs
- Human resources
- Information technology
- Intellectual property
- Legal and compliance
- Logistics and transportation
- Management consulting
- Mergers and acquisitions
- Real estate
- Security and safety
- Shared services
- Strategy and planning
- Travel management
- Vehicle management

Location	Summary
<p><b>Siemens Corporation Corporate Research</b> 755 College Road East Princeton, NJ 08540-6632 Tel: (609) 734-6500 Fax: (609) 734-6565 usa.siemens.com/research</p>	<ul style="list-style-type: none"> <li>• Automation engineering and run-time systems</li> <li>• Collective intelligence</li> <li>• Cross Global Technology Field (GTF) initiative</li> <li>• Electronic, energy and environment</li> <li>• High performance building</li> <li>• Image analytics and informatics</li> <li>• Imaging and visualization</li> <li>• Intelligent systems and control</li> <li>• Knowledge and decision systems</li> <li>• Processes and production</li> <li>• Software, security and systems</li> </ul>
<p><b>Siemens Corporation Corporate Research Technology-To-Business Center</b> 1995 University Avenue Suite 375 Berkeley, CA 94704-1074 Tel: (510) 665-1330 Fax: (510) 665-1331</p>	<ul style="list-style-type: none"> <li>• Acquisition of venture funding</li> <li>• Early-stage business development and market validation</li> <li>• Early-stage start-up development</li> <li>• Innovation sourcing and development</li> <li>• Transfer of product innovations to Siemens' businesses</li> </ul>
<p><b>Siemens Corporation Global Shared Services North America</b> 3500 Quadrangle Boulevard Mail Stop AL-111 Orlando, FL 32817-8326 Tel: (407) 487-5318</p>	<ul style="list-style-type: none"> <li>• Accounting and finance services</li> <li>• Human resources services</li> <li>• Supply chain management services</li> </ul>
<p><b>Siemens Corporation Management Consulting</b> 665 Broadway Suite 700 New York, NY 10012-2302 Tel: (212) 381-2100 Fax: (212) 381-2101 siemens.com/smc</p>	<ul style="list-style-type: none"> <li>• Benchmarking</li> <li>• Growth and sales stimulation</li> <li>• Innovation</li> <li>• Mergers and acquisitions</li> <li>• Quality</li> <li>• Restructuring</li> <li>• Strategy</li> <li>• World-class processes</li> </ul>
<p><b>Siemens Corporation Real Estate</b> 170 Wood Avenue South Iselin, NJ 08830-2726 Tel: (732) 321-3180 (732) 321-3157 Fax: (732) 603-5866 usa.siemens.com/realestate</p>	<ul style="list-style-type: none"> <li>• Architectural and engineering services</li> <li>• Asset management</li> <li>• Benchmarking analysis</li> <li>• Construction</li> <li>• Due diligence</li> <li>• Facility management supervision and control</li> <li>• Governmental incentive packages</li> <li>• Lease administration</li> <li>• Project management</li> <li>• Signage and corporate design standards</li> <li>• Site selection</li> <li>• Space planning and programming</li> <li>• Special projects</li> <li>• Strategic planning</li> <li>• Sustainability and natural resource management</li> <li>• Transaction management</li> </ul>

**Location****Siemens Corporation  
Siemens One**

1345 Ridgeland Parkway  
Alpharetta, GA 30004-8467  
Tel: (678) 867-7445  
Fax: (678) 867-7450  
[usa.siemens.com/siemensone](http://usa.siemens.com/siemensone)

**Summary**

- Siemens One is a sales and marketing organization that enables customers to realize the potential of integrating Siemens' products, services and solutions. By leveraging the breadth of Siemens portfolio of innovations and technologies, the Siemens One team provides customers with tailored solutions that improve their performance and bolster their competitive position in the marketplace.
- Siemens One clients represent a broad spectrum of markets within the sectors of healthcare, energy, industry including city/state infrastructure and U.S. Federal Government.

# Siemens Energy, Inc.

## Headquarters

4400 Alafaya Trail  
Orlando, FL 32826-2399

Tel: (407) 736-2000  
Fax: (407) 736-3131

[siemens.com/energy](http://siemens.com/energy)

Energy

Siemens Energy is the world's leading supplier of a complete spectrum of products, services and solutions for the generation, transmission and distribution of power and for the extraction, conversion and transport of oil and gas. The company develops and builds fossil-fueled power plants, power-generating components, wind turbines, turbines for use as mechanical drives and compressors for industrial applications, air pollution control technologies, and instrumentation and control systems. It offers operations, maintenance and management services for its own technology as well as that of other manufacturers. The company is also a leading supplier of high and medium voltage power delivery equipment, energy management systems, network planning and power system engineering software for regulated and deregulated generation, transmission, and distribution markets.

## Location

**Siemens Energy, Inc.**  
4400 Alafaya Trail  
Orlando, FL 32826-2399  
Tel: (407) 736-2000  
Fax: (407) 736-3131

## Summary

- 50-Hz and 60-Hz gas and steam turbine-generators up to 1,100MW
- Air pollution control equipment
- Concentrated solar power and solar thermal power systems
- Distribution network solutions for a single product to a turnkey plant
- Factory and field-based service of gas and steam turbine-generators and auxiliary equipment
- Gas-insulated transmission lines
- High voltage direct current transmission solutions
- Network consulting/planning software
- Power plant modernizations, upgrades and service contracts
- Service for boilers, heat recovery steam generators and balance of plant equipment
- Solutions for distribution networks and substations
- Supervisory Control And Data Acquisition (SCADA) and Energy Management Systems (EMS) for electric utilities
- Training programs
- Transformers for high voltage applications
- Turnkey fossil-fueled power plants
- Wind power turbines and wind farms
- World-class process control and power management systems

**Location**

**Siemens Energy, Inc.**  
**Distribution Energy Management & Automation**  
10900 Wayzata Boulevard  
Suite 400  
Minnetonka, MN 55305-1534  
Tel: (952) 607-2804  
Fax: (952) 607-2252

1700 Technology Drive  
Mail Stop 222  
San Jose, CA 95110-1383  
Tel: (408) 453-5222  
Fax: (408) 452-5260

7000 Siemens Road  
Wendell, NC 27591-8309  
Tel: (919) 365-2200  
Fax: (919) 365-2583

**Summary**

- Consultation
- Decision support applications for network operators
  - Dynamic stability/voltage assessment
  - Historical data storage and recovery
  - Improved data modeling
  - Intelligent alarm processing
  - Restoration assistance
  - Security analysis
  - Simulation and training
  - State estimation
- Deregulation applications
- Distribution automation
- Energy management and control systems for utilities and grid operators
- Operations data management
- Protective relays
- RTUs
- Substation automation
- Supervisory Control and Data Acquisition (SCADA)
- Technical support services

---

**Siemens Energy, Inc.**  
**Distribution Products, High Voltage Systems, Transformers and Service Solutions**

7000 Siemens Road  
Wendell, NC 27591-8309  
Tel: (919) 365-2200  
Fax: (919) 365-1112

**Distribution Products**

- Medium Voltage (MV) switchgear
- MV motor control and breakers
- Reclosers

**High Voltage Systems**

- Flexible Alternating Current Transmission Systems (FACTS)
- Gas Insulated Switchgear (GIS)
- Gas Insulated transmission Lines (GIL)
- High Voltage Direct Current (HVDC) transmission systems
- Power system studies
- Series capacitors
- Static Var Compensation (SVC)

**Transformers and Service Solutions**

- Breaker retrofits
- Equipment life extension services
- Installation and commissioning
- Modernization
- Power equipment repair and maintenance
- Refurbishment

---

**Siemens Energy, Inc.**  
**Environmental Systems and Services**

501 Grant Street  
Pittsburgh, PA 15219-4407  
Tel: (412) 562-7500  
Fax: (412) 562-7308

- Air pollution control products and equipment services
- Electrostatic precipitators
- Fabric filters
- Flue gas desulfurization (wet and dry)
- NO<sub>x</sub> and ancillary products

Location	Summary
<p><b>Siemens Energy, Inc.</b>  <b>Instrumentation, Controls and Electrical</b>            1345 Ridgeland Parkway            Suite 116            Alpharetta, GA 30004-5223            Tel: (678) 256-1500            Fax: (678) 256-1556</p>	<ul style="list-style-type: none"> <li>• Controls for turbines/rotating equipment</li> <li>• Diagnostic and electrical solutions for improving plant availability</li> <li>• Energy management software</li> <li>• Power plant automation systems</li> <li>• Process optimization solutions</li> <li>• Simulation tools</li> </ul>
<p><b>Siemens Energy, Inc.</b>  <b>Oil, Gas and Industrial Applications</b>            10730 Telge Road            Houston, TX 77095-5002            Tel: (281) 856-4400            Fax: (281) 856-4499</p>	<ul style="list-style-type: none"> <li>• Gas and steam turbine-generators for a range of industrial applications</li> <li>• Industrial power plants up to 150MW</li> <li>• Process safety software solutions for the oil and gas industry</li> <li>• Steam turbine-generators for solar thermal applications</li> <li>• Turbo-compressors for petrochemical, refining, oil and gas, and chemical applications</li> </ul>
<p><b>Siemens Energy, Inc.</b>  <b>Photovoltaic Solar Power</b>            2303 Camino Ramon            Suite 100            San Ramon, CA 94523-1176            Tel: (925) 913-4101            Fax: (925) 867-4621</p>	<ul style="list-style-type: none"> <li>• Engineering, procurement and construction of utility-scale photovoltaic solar power systems</li> </ul>
<p><b>Siemens Energy, Inc.</b>  <b>Power Technologies International</b>            1482 Erie Boulevard            Schenectady, NY 12305-1005            Tel: (518) 395-5000            Fax: (518) 346-2777</p>	<ul style="list-style-type: none"> <li>• Competitive market analysis</li> <li>• Distribution substation design and monitoring</li> <li>• Disturbance monitoring</li> <li>• Generation plant testing monitoring and diagnostics</li> <li>• Grid connection studies</li> <li>• Network consulting and analytical studies</li> <li>• Open access transmission strategy and planning</li> <li>• Power System Software (PSS/E, MUST, TPLAN™)</li> <li>• Transmission system planning and reliability analysis</li> <li>• Wind power modeling</li> </ul>
<p><b>Siemens Energy, Inc.</b>  <b>Smart Grid Applications</b>            7000 Siemens Road            Wendell, NC 27591-8309            Tel: (919) 365-2200            Fax: (919) 365-1112</p>	<ul style="list-style-type: none"> <li>• Communications analysis services</li> <li>• Demand response solutions</li> <li>• Electric vehicle infrastructure</li> <li>• Meter data management</li> <li>• Microgrids</li> <li>• Smart grid consulting and integration</li> </ul>
<p><b>Siemens Energy, Inc.</b>  <b>Transmission Products</b>            444 Highway 49 South            Richland, MS 39218-9442            Tel: (601) 939-0550            Fax: (601) 939-3606</p>	<ul style="list-style-type: none"> <li>• Circuit switchers</li> <li>• Power circuit breakers</li> <li>• Surge arresters</li> <li>• Voltage regulators</li> </ul>

# Siemens Financial Services, Inc.

## Headquarters

170 Wood Avenue South  
Iselin, NJ 08830-2726

Tel: (800) 327-4443  
Fax: (732) 590-6614

## Cross-Sector

[usa.siemens.com/finance](http://usa.siemens.com/finance)

Siemens Financial Services offers a comprehensive set of working capital and long-term financing solutions that are tailored to fit the specific borrowing needs of industrial, energy and healthcare customers.

### Location

#### Siemens Financial Services, Inc.

170 Wood Avenue South  
Iselin, NJ 08830-2726  
Tel: (800) 327-4443  
Fax: (732) 590-6614

### Summary

- Asset-based lending
- Commercial equipment finance
- Corporate finance solutions
- Equity portfolio and project management
- Export financing
- Junior capital solutions
- Municipal financing with tax-exempt rates and flexible terms
- Performance-based service contract financing
- Project and acquisition financing
- Senior secured debt
- Trade finance
- Venture capital

# Siemens Capital Company LLC

## Headquarters

170 Wood Avenue South  
Iselin, NJ 08830-2726

Tel: (732) 590-2500  
Fax: (732) 590-2501

## Cross-Sector

Siemens Capital Company is part of the Treasury, Finance Services and Investment Management groups of Siemens Financial Services, which provides Siemens entities with treasury, banking, accounting, working capital finance and investment products and services. The company's core mandates are to ensure that Siemens is able to meet its financial obligations at all times and to offer cost-efficient financing solutions to the Siemens entities.

### Location

#### Siemens Capital Company LLC

170 Wood Avenue South  
Iselin, NJ 08830-2726  
Tel: (732) 590-2500  
Fax: (732) 590-2501

### Summary

- Banking and treasury services
- Centralized cash management
- Financial risk management
- Inter-company financing and accounting services
- Payables financing (supply chain finance)
- Payment systems support
- Pension fund management and pension benefits accounting
- Receivables purchasing (Siemens credit warehouse)

# Siemens Foundation

## Headquarters

170 Wood Avenue South  
Iselin, NJ 08830-2726

Tel: (877) 822-5233  
Fax: (732) 603-5890

[siemens-foundation.org](http://siemens-foundation.org)

Cross-Sector

The Siemens Foundation, an independent, not-for-profit organization recognized under Section 501(c)(3) of the Internal Revenue Code and founded in 1998, is supported in large part by contributions from the Siemens U.S. sectors. The Foundation's programs are shaped by a culture of innovation, research, and a commitment to educational advancement. The Foundation's programs engage America's future workforce in activities that stimulate interest in the fields of science, technology, engineering and mathematics.

## Summary

The Siemens Competition in Math, Science and Technology is the nation's premier research competition for high school students. Administered in partnership with the College Board, the competition provides high school students and schools an opportunity to achieve national recognition for original math, science and technology research projects. The Siemens Competition partners with the following six universities for its regional competitions:

- California Institute of Technology, Pasadena, CA
- Carnegie Mellon University, Pittsburgh, PA
- Georgia Institute of Technology, Atlanta, GA
- Massachusetts Institute of Technology, Cambridge, MA
- University of Notre Dame, South Bend, IN
- The University of Texas, Austin, TX

The Siemens Awards for Advanced Placement (AP), administered in partnership with the College Board, provide scholarships and awards to students and teachers in every state, recognizing excellence in the Advanced Placement program.

The Siemens We Can Change the World Challenge is a national K-12 sustainability education initiative aligned to state education standards and uniquely tailored to match students' growing comprehension abilities throughout their school-aged years. By partnering with Discovery Education and the National Science Teachers Association, the Siemens Foundation serves as a pioneer in empowering teams of students, under the mentorship of an adult supervisor, to use scientific principles to improve their classrooms, their communities and their world.

Siemens Science Day is an innovative program designed to captivate young students' interest in math, science and technology through hands-on science activities. Partnering with Discovery Education provides an instant platform to reach today's 21st century learners with an engaging curriculum that inspires and informs today's youth.

The Siemens STEM Academy is an online community designed exclusively to foster achievement in Science, Technology, Engineering, and Math (STEM) through the collaboration of STEM educators, and sharing of "best practices."

# Siemens Government Services, Inc.

## Headquarters

1881 Campus Commons Drive    Tel: (703) 483-2000  
#300    Fax: (703) 483-2001  
Reston, VA 20191-1522

## Cross-Sector

siemensgovt.com

Siemens Government Services, established as a special purpose, wholly-owned subsidiary of Siemens Corporation, is a federally compliant integrator of Siemens technology and solutions for the federal marketplace. With exceptional resources, access to advanced and emerging technologies, and dedicated client focus, the company helps the federal government manage infrastructure, improve security, and meet their energy operational demands with greater efficiency and control than ever before.

### Location

#### Siemens Government Services, Inc.

1881 Campus Commons Drive  
#300  
Reston, VA 20191-1522  
Tel: (703) 483-2000  
Fax: (703) 483-2001

### Summary

- Energy Savings Performance Contracting (ESPC)
- Fire and life safety detection, suppression and alarm systems
- Facility and infrastructure modernization (including building controls and automation; communication and networks)
- Integrated security solutions
  - Access and identity controls
  - Command and control software and systems
  - Enterprise asset management and resource tracking
  - RFID, biometrics, and HSPD-12 solutions
  - Surveillance, perimeter, and physical security systems
- Lifecycle support
  - Call center and technical support/dispatch
  - Government property management
  - Preventative and predictive maintenance
  - Supply chain management
  - Warehouse and distribution services
- Product Lifecycle Management (PLM) sales and consulting services
- Program Management Office (PMO) services

# Siemens Healthcare Diagnostics Inc.

## Headquarters

1717 Deerfield Road  
Deerfield, IL 60015-3900

Tel: (847) 267-5300  
Fax: (847) 267-6019

[usa.siemens.com/diagnostics](http://usa.siemens.com/diagnostics)

Healthcare

Siemens Healthcare Diagnostics is taking a leadership role in developing the future of healthcare by providing clinicians with the vital information they need for the accurate diagnosis, treatment and monitoring of patients. Our comprehensive portfolio of products, used by clinical laboratories to perform blood and urine tests, is designed to streamline clinical work flows, enhance operational efficiencies and improve patient care.

## Location

## Summary

**Siemens Healthcare  
Diagnostics Inc.  
Chemistry/Automation/  
Immunoassay (CAI)  
Business Unit**

511 Benedict Avenue  
Tarrytown, NY 10591-5005  
Tel: (914) 631-8000

- Chemistry
- Diagnostics IT
- Immunoassay
- Integrated systems
- Laboratory automation

**Siemens Healthcare  
Diagnostics Inc.  
Molecular/Microbiology (MM)  
Business Unit**

725 Potter Street  
Berkeley, CA 94710-2722  
Tel: (510) 982-4000

- Microbiology
- Molecular diagnostics

**Siemens Healthcare  
Diagnostics Inc.  
Point of Care (POC)  
Business Unit**

2 Edgewater Drive  
Norwood, MA 02062-4637  
Tel: (781) 762-2146

- Blood gas
- Diabetes
- Urinalysis

# Siemens Hearing Instruments, Inc.

## Headquarters

10 Constitution Avenue  
Mail: P.O. Box 1397  
Piscataway, NJ 08855-1397

Tel: (732) 562-6600  
(800) 766-4500  
Fax: (732) 562-6640

## Healthcare

[usa.siemens.com/hearing](http://usa.siemens.com/hearing)

Siemens Hearing Instruments is a global market leader in innovative hearing instruments and accessories. The company's passion for innovation has been at the core of its business for over 130 years. Siemens Hearing Instruments offers the industry's most comprehensive portfolio of hearing aids enhanced with exclusive BestSound™ Technology for the utmost in speech intelligibility, feedback cancellation, learning and more. It continuously strives to be the partner of choice for hearing care professionals by offering professional marketing consulting services, e-business solutions, educational development, and advanced workflow solutions. As the industry leader in research, technology, and manufacturing, the company is helping millions of people each day enjoy every decibel of life.

### Location

**Siemens Hearing Instruments, Inc.**  
10 Constitution Avenue  
Mail: P.O. Box 1397  
Piscataway, NJ 08855-1397  
Tel: (732) 562-6600  
(800) 766-4500  
Fax: (732) 562-6640

### Summary

- Hearing aids, batteries and accessories
- Marketing services
- Practice/office management software

# Siemens Industry, Inc.

## Corporate Offices

3333 Old Milton Parkway  
Alpharetta, GA 30005-4437  
Tel: (770) 751-2000  
(800) 964-4114  
Fax: (770) 740-3699

1000 Deerfield Parkway  
Buffalo Grove, IL 60089-4513  
Tel: (847) 215-1000  
(800) 877-7545  
Fax: (847) 215-1093

7464 French Road  
Sacramento, CA 95828-4600  
Tel: (916) 681-3000  
(800) 743-6367  
Fax: (916) 681-3006

[usa.siemens.com/industry](http://usa.siemens.com/industry)

Industry

Siemens Industry, Inc. is a leading supplier of automation, transportation, lighting and building technologies. With five divisions and two subsidiary companies, Siemens Industry's integrated hardware and software technologies enable comprehensive industry-specific solutions for industrial and infrastructure providers to increase their productivity, sustainability and profitability. The company helps cities become more sustainable, helps automate factories for greater productivity and efficiency, and helps buildings become more energy efficient, safe and secure.

## Summary

### Building Automation

- APOGEE™ building automation systems
- Indoor air quality
- Lab and specialized environments
- Mechanical systems services
- Systems integration
- Wireless networks

### Control Products and Systems

- Sensors, controllers and combustion controls
- Talon® control systems and components
- Valves and actuators
- Variable frequency drives

### Energy and Environmental Solutions

- Energy conservation and optimization
- Energy price and risk management
- Energy reliability and security
- Energy savings performance guarantees
- LEED-certified green building solutions
- Sustainable operations management

### Security Solutions

- Access and identity control
- Biometric verification
- Central monitoring and control
- Intrusion detection
- Network security
- Screening and detection
- Video analytics and surveillance

**Location**

**Siemens Industry, Inc.**  
**Building Technologies Division**  
9 Fernwood Road  
Florham Park, NJ 07932-1906  
Tel: (973) 593-2600  
Fax: (973) 593-6670

**Summary****Fire Safety**

- Alarms and initiating devices
- Fire, smoke and air duct detectors
- Fire suppression and air sampling systems
- FireFinder™ life safety systems
- FireSeeker™ fire detection systems
- Linear beam fire detectors
- Sygnal® mass notification systems

**Siemens Industry, Inc.**  
**Building Technologies Division**  
5400 Triangle Parkway  
Norcross, GA 30092-2540  
Tel: (800) 964-4114

**Low-Voltage Distribution**

- AFCI and GFCI circuit protection
- Circuit protection devices (power and molded case circuit breakers)
- Lighting control
- LV switchgear
- Murray electrical products
- Panelboards/switchboards
- Power monitoring and control systems
- Residential electrical distribution
- Safety switches and OEM switches
- Structured wiring and home control
- Totally integrated power

**Siemens Industry, Inc.**  
**Drive Technologies Division**  
100 Technology Drive  
Alpharetta, GA 30005-3900  
Tel: (800) 964-4114

- Condition monitoring
- Explosion-proof drives
- Frequency inverters
- Geared motors
- Gears and clutches for wind and industry
- Industrial, special and traction drives and motors
- Low-voltage motors
- Motion control systems
- NEMA, IEC and above NEMA motors
- Numerical controls
- Servo and linear motors

**Siemens Industry, Inc.**  
**Industry Automation Division**  
5300 Triangle Parkway  
Norcross, GA 30092-2538  
Tel: (800) 964-4114

**Automation Systems**

- Application engineering services
- Automation solutions for upgrades and retrofits
- Customer training
- Human-machine interfaces
- Hybrid control systems
- Industrial software
- Loop controllers
- Machine safety systems
- Manufacturing execution systems
- Microautomation
- Process automation systems
- Programmable logic controllers
- Safety systems
- Totally integrated automation
- Tracking and tracing solutions for manufacturing and retail

**Location**

**Siemens Industry, Inc.**  
**Industry Automation Division**  
 5300 Triangle Parkway  
 Norcross, GA 30092-2538  
 Tel: (800) 964-4114

**Summary**
**Control Components and Systems Engineering**

- Customer training
- Explosion-proof drives
- IEC and NEMA products
- Management operations management
- Motor controls center
- NEMA controls

**Siemens Industry, Inc.**  
**Industry Automation Division**  
 734 West North Carrier Parkway  
 Grand Prairie, TX 75050-1001  
 Tel: (800) 964-4114

**Sensors and Communication**

- Continuous gas analyzers
- Customer training
- Laser diode spectrometer
- Magnetic flow meters
- Mass flow meters
- Pneumatic instruments
- Point level sensors
- Pressure transmitters
- Process analytics design engineering
- Process gas chromatographs
- Process instrumentation and analytics
- Process protection instruments
- Radar level instruments
- Single loop controllers
- Temperature transmitters
- Ultrasonic flow meters
- Valve positioners
- Vortex flow meters
- Weighing and feeding equipment

**Siemens Industry, Inc.**  
**Industry Automation Division**  
**Automotive & Aerospace Center of Competency**  
 777 Chicago Road  
 Troy, MI 48083-4223  
 Tel: (800) 964-4114

- Industry suites for automotive/aerospace manufacturing
- Products, services and solutions for automobile/aerospace manufacturing

**Siemens Industry, Inc.**  
**Industry Automation Division**  
**Chem/Pharm Center of Competency**  
 1201 Sumneytown Pike  
 Springhouse, PA 19477-1019  
 Tel: (800) 964-4114

- Industry suites for:
  - Chemical manufacturing
  - Glass manufacturing
  - Pharmaceutical manufacturing
  - Semiconductor manufacturing

**Siemens Industry, Inc.**  
**Industry Automation Division**  
**Food & Beverage Center of Competency**  
 5300 Triangle Parkway  
 Norcross, GA 30092-2538  
 Tel: (800) 964-4114

- Industry suites for food and beverage manufacturing
- Products, services and solutions for food and beverage manufacturing

Location	Summary
<p><b>Siemens Industry, Inc.</b>  <b>Industry Solutions Division</b>            100 Technology Drive            Alpharetta, GA 30005-3900            Tel: (770) 740-3000            (800) 241-4453            Fax: (770) 740-3699</p>	<ul style="list-style-type: none"> <li>• Arc flash studies</li> <li>• Automation and integration services</li> <li>• Completely integrated solutions:               <ul style="list-style-type: none"> <li>— Marine: SISHIP and SINAVY</li> <li>— Metals: SIMELT and SIROLL</li> <li>— Paper: SIPAPER</li> <li>— Water: SIWA</li> </ul> </li> <li>• Construction, installation and commissioning services</li> <li>• Disaster recovery services</li> <li>• Engineering and field services</li> <li>• Front-end engineering and design</li> <li>• Integral plant maintenance programs</li> <li>• Modernization/upgrade programs</li> <li>• Motors and drive management services</li> <li>• Power delivery service agreements</li> </ul>
<p><b>Siemens Industry, Inc.</b>  <b>Industry Solutions Division</b>  <b>Metals Technologies</b>            101 Terra Road            Blytheville, AR 72315-6956            Tel: (870) 762-1905            Fax: (870) 762-1963</p>	<ul style="list-style-type: none"> <li>• Engineering services</li> <li>• Fabrication and welding services</li> <li>• In-house nickel and chrome plating</li> <li>• In-plant laser measurement and millwright services</li> <li>• Mechanical machining of components</li> </ul>
<p><b>Siemens Industry, Inc.</b>  <b>Industry Solutions Division</b>  <b>Metals Technologies</b>            501 Technology Drive            Canonsburg, PA 15317-9585            Tel: (877) 418-7659            (724) 514-8500</p>	<ul style="list-style-type: none"> <li>• Total design, engineering, manufacturing, installation and service of metals industry equipment and technologies:               <ul style="list-style-type: none"> <li>— Casting</li> <li>— Metals automation</li> <li>— Process lines</li> <li>— Rolling mills</li> <li>— Steelmaking</li> </ul> </li> </ul>
<p><b>Siemens Industry, Inc.</b>  <b>Industry Solutions Division</b>  <b>Metals Technologies</b>            40 Crescent Street            Worchester, MA 01605-2404            Tel: (877) 418-7659            (724) 514-8500</p>	<ul style="list-style-type: none"> <li>• Electrical automation and mechatronic solutions</li> <li>• Engineering, manufacturing, project management</li> <li>• Metallurgical services center</li> <li>• Morgoil bearings, guides, and spares</li> <li>• New development platform for mining truck solutions</li> </ul>
<p><b>Siemens Industry, Inc.</b>  <b>Industry Solutions Division</b>  <b>Water Technologies</b>            181 Thorn Hill Road            Warrendale, PA 15086-7527            Tel: (724) 772-0044            Fax: (724) 772-1360</p>	<ul style="list-style-type: none"> <li>• Aquatic water</li> <li>• Corrosion and biofouling protection</li> <li>• Design, manufacture, sale and service of systems and equipment to treat water and wastewater for municipalities and industrial customers worldwide</li> <li>• Drinking water treatment</li> <li>• Groundwater treatment</li> <li>• High purity water</li> <li>• Industrial process water</li> <li>• Odor and vapor control</li> <li>• Oil and gas produced water</li> <li>• Sludge and biosolids treatment</li> <li>• Wastewater treatment</li> <li>• Water recycle and reuse</li> </ul>

**Location****Siemens Industry, Inc.  
Mobility Division**

371 Bel Marin Keys Boulevard  
Suite 200  
Novato, CA 94949-5662  
Tel: (415) 884-3000  
Fax: (415) 884-4800

**Summary****Complete Transportation**

- City-wide control systems
- Intelligent traffic solutions
- Intelligent transportation services
- LED traffic retrofits
- Park and eCharge
- Rail electrification
- Traffic and streetlight maintenance
- Traffic signaling products
- Turnkey projects

**Siemens Industry, Inc.  
Mobility Division**

1401 Nolan Ryan Expressway  
Arlington, TX 76011-4907  
Tel: (817) 436-7000  
(800) 433-5175  
Fax: (817) 436-7476

**Infrastructure Logistics**

- Address recognition systems
- After-market sales and service
- Air cargo and baggage handling products and solutions
- Integrated reader video systems
- Interactive reading and video coding systems
- Postal information technology
- Pre-processing and mail sorting solutions for government and commercial postal markets
- Service and support
- Systems integration

**Siemens Industry, Inc.  
Mobility Division**

498 Seventh Avenue  
16th Floor  
New York, NY 10018-6798  
Tel: (212) 672-4000  
Fax: (212) 672-4001

**Rail Automation**

- Integrated rail communications systems
- Integrated voice and data communication systems
- Operation control centers
- Rail signaling and safety systems for main-line and mass transit

**Siemens Industry, Inc.  
Mobility Division**

7464 French Road  
Sacramento, CA 95828-4600  
Tel: (916) 681-3000  
(800) 743-6367  
Fax: (916) 681-3006

**Rolling Stock**

- AC-traction locomotives
- Complete design/build turnkey systems
- Heavy rail vehicles
- High-speed rail vehicles
- Integrated services
- Light rail vehicles
- Multiple unit vehicles
- Rolling stock services and maintenance
- Vehicle components

# Siemens Medical Solutions USA, Inc.

## Headquarters

51 Valley Stream Parkway  
Malvern, PA 19355-1406

Tel: (610) 448-4500  
(888) 826-9702  
Fax: (610) 448-2554

## Healthcare

[usa.siemens.com/healthcare](http://usa.siemens.com/healthcare)

Siemens Healthcare is one of the world's largest suppliers to the healthcare industry. The company is a renowned medical solutions provider with core competence and innovative strength in diagnostic and therapeutic technologies as well as knowledge engineering, including information technology and system integration. With its laboratory diagnostics acquisitions, Siemens is the first integrated healthcare company, bringing together imaging and lab diagnostics, therapy, and healthcare information technology solutions, supplemented by consulting and support services. The company delivers solutions across the entire continuum of care — from prevention and early detection, to diagnosis, therapy and care.

### Location

#### **Siemens Medical Solutions USA, Inc.**

51 Valley Stream Parkway  
Malvern, PA 19355-1406  
Tel: (610) 448-4500  
Fax: (610) 448-2554

### Summary

#### **Clinical Products Division**

- Digital radiology/fluoroscopy
- Mammography
- Mobile X-ray/Surgical C-arm systems
- Ultrasound
- Urology/lithotripsy systems

#### **Customer Solutions**

- Application Service Provider (ASP)
- Customer service
- Health services and Healthcare Information Technology (HIT)

#### **Imaging & Therapy Systems Division**

- Accessory solutions
- Angiography and interventional X-ray systems
- Cardiology labs
- Computed Aided Detection (CAD)
- Computed Tomography (CT)
- Magnetic Resonance Imaging (MRI)
- Molecular Imaging (MI)
- Oncology Care Systems (OCS)
- Picture Archiving and Communications Systems (PACS) and Networking
- Positron Emission Tomography (PET)
- Refurbished systems
- Single Photon Emission Computed Tomography (SPECT)

Location	Summary
<p><b>Siemens Medical Solutions USA, Inc.</b>  <b>Customer Service Center</b>            110 MacAlison Court            Cary, NC 27511-7912            Tel: (800) 888-7436            Fax: (919) 319-2680</p>	<ul style="list-style-type: none"> <li>• Consulting and IT services</li> <li>• Education</li> <li>• Product support</li> <li>• Uptime services</li> </ul>
<p><b>Siemens Medical Solutions USA, Inc.</b>  <b>Financial Services</b>            51 Valley Stream Parkway            Malvern, PA 19355-1406            Tel: (888) 826-9702            Fax: (610) 448-1534</p>	<ul style="list-style-type: none"> <li>• Fair market value leases</li> <li>• Finance leases</li> <li>• Financing for the acquisition or leasing of Siemens Healthcare products</li> <li>• Leasehold improvement financing</li> <li>• Operating leases</li> <li>• Software financing</li> <li>• Tax-exempt leases</li> <li>• Technology refresh program</li> <li>• Working capital line of credit</li> </ul>
<p><b>Siemens Medical Solutions USA, Inc.</b>  <b>Healthcare Information Technology</b>            51 Valley Stream Parkway            Malvern, PA 19355-1406            Tel: (610) 219-6300            Fax: (610) 219-3124</p>	<ul style="list-style-type: none"> <li>• Application Service Provider (ASP)</li> <li>• Clinical information systems</li> <li>• Computer-based patient records</li> <li>• Customer services:               <ul style="list-style-type: none"> <li>— Applications support</li> <li>— Consulting</li> <li>— Installation</li> <li>— Integrated Service Management (ISM)</li> <li>— Product service delivery</li> <li>— Remote diagnostics and repair</li> <li>— Service training and development</li> <li>— Technical support</li> </ul> </li> <li>• Electronic Data Interchange (EDI) services</li> <li>• Financial systems</li> <li>• Healthcare information systems</li> <li>• Infrastructure technology</li> <li>• Networking services</li> <li>• Outsourcing</li> <li>• Physician support (physician practice management)</li> <li>• Systems integration solutions</li> <li>• Workflow management</li> </ul>
<p><b>Siemens Medical Solutions USA, Inc.</b>  <b>Molecular Imaging</b>            2501 North Barrington Road            Hoffman Estates, IL 60195-2061            Tel: (847) 304-7700            Fax: (847) 304-7707</p> <p>810 Innovation Drive            Knoxville, TN 37932-2562            Tel: (865) 218-2000            Fax: (865) 218-3000</p>	<ul style="list-style-type: none"> <li>• Biomarker solutions (Cyclotrons, FDG distribution, chemistry modules)</li> <li>• Clinical hybrid imaging (SPECT-CT and PET-CT)</li> <li>• Positron Emission Tomography (PET)</li> <li>• Preclinical systems (PET, SPECT, CT)</li> <li>• Single Photon Emission Computed Tomography (SPECT)</li> </ul>

Location	Summary
<p><b>Siemens Medical Solutions USA, Inc.</b>  <b>Oncology Care Systems</b>            4040 Nelson Avenue            Concord, CA 94520-1200            Tel: (925) 246-8200            Fax: (925) 246-8284</p>	<ul style="list-style-type: none"> <li>• Image-guided radiation therapy</li> <li>• Oncology information management system</li> <li>• Radiation therapy treatment systems (linear accelerators)</li> <li>• Simulation systems</li> <li>• Treatment planning</li> </ul>
<p><b>Siemens Medical Solutions USA, Inc.</b>  <b>Ultrasound Systems</b>            1230 Shore Bird Way            Mountain View, CA 94043-1344            Tel: (650) 969-9112            Fax: (650) 968-1833</p> <p>22010 SE 51st Street            Issaquah, WA 98027-7298            Tel: (800) 367-3569            Tel: (425) 392-9180</p>	<ul style="list-style-type: none"> <li>• Cardiology</li> <li>• Gastroenterology</li> <li>• OB/GYN</li> <li>• Portable ultrasound solutions</li> <li>• Three-dimensional and four-dimensional ultrasound imaging</li> </ul>

# Siemens PLM Software, Inc.

## Headquarters

5800 Granite Parkway  
Suite 600  
Plano, TX 75024-6612

Tel: (972) 987-3000  
Fax: (972) 987-3397

[siemens.com/plm](http://siemens.com/plm)

Industry

Siemens PLM Software, part of the Industry sector, is a leading global provider of Product Lifecycle Management (PLM) software and services with 6.7 million licensed seats and 69,500 customers worldwide. The company works collaboratively with companies around the world to deliver open software solutions that help them turn more ideas into successful products.

## Summary

### Digital Lifecycle Management

- 3D product visualization
- Compliance management
- Global/community collaboration
- Maintenance, Repair and Overhaul (MRO)
- Mechatronics process management
- Portfolio, program and project management
- Product and process knowledge management
- Supplier relationship management
- System engineering and requirements management

### Digital Manufacturing

- Assembly planning and validation
- Manufacturing process management
- Part planning and validation
- Plant design and optimization
- Production and quality management
- Robotics and automation planning

### Digital Product Development (CAD/CAM/CAE)

- Electromechanical systems design and simulation
- Engineer to order solutions
- Engineering process management
- Industrial design and styling
- Machining
- Mechanical design and simulation
- Package design
- Tooling and fixture design

### Open Software Solutions and Standards

- 3D geometric modeling
- 3D shape search technology
- Collaboration
- Data sharing and interoperability
- Parametric design tools
- Visualization

### PLM for Mid-market Manufacturers

- 3D Computer-Aided Design (CAD)
- Computer-Aided Manufacturing (CAM)
- Finite Element Modeling (FEM)
- Product Data Management (PDM)

# OSRAM SYLVANIA Inc.

## Headquarters

100 Endicott Street  
Danvers, MA 01923-3623

Tel: (978) 777-1900  
Fax: (978) 750-2152

## Industry

[sylvania.com](http://sylvania.com)

SYLVANIA is a leader in lighting solutions that feature innovative design and energy-saving technology. The company sells products for homes, businesses and vehicles primarily under the SYLVANIA brand name, and also under the OSRAM brand.

### Location

**OSRAM SYLVANIA Inc.**  
**Automotive Lighting**  
275 West Main Street  
Hillsboro, NH 03244-5233  
Tel: (603) 464-5533  
Fax: (603) 464-0259

### Summary

- Aftermarket automotive lighting products
- OEM automotive lighting products

**OSRAM SYLVANIA Inc.**  
**Display/Optic**  
129 Portsmouth Avenue  
Exeter, NH 03833-2105  
Tel: (603) 772-4331  
Fax: (603) 772-1072

- Light sources for:
  - Cinema film projection
  - Entertainment
  - Industrial
  - Information display
  - Medical
  - Scientific
  - Semiconductor applications

**OSRAM SYLVANIA Inc.**  
**Engineering**  
54 Cherry Hill Drive  
Danvers, MA 01923-2575  
Tel: (978) 777-1900  
Fax: (978) 750-3903

- Light management systems
- Lighting ballasts
- Solid state lighting

**OSRAM SYLVANIA Inc.**  
**General Lighting**  
100 Endicott Street  
Danvers, MA 01923-3623  
Tel: (978) 777-1900  
Fax: (978) 750-2152

- Consumer lighting products
- Industrial and commercial lighting products
- Lighting maintenance and energy-saving lighting retrofits

**OSRAM SYLVANIA Inc.**  
**Research & Development**  
71 Cherry Hill Drive  
Beverly, MA 01915-1068  
Tel: (978) 777-1900  
Fax: (978) 750-1797

- Fundamental lighting research and testing

Notes:



To download a PDF of this brochure or to view online:  
[usa.siemens.com/answers\\_for\\_america](http://usa.siemens.com/answers_for_america)

To order printed copies, contact:  
[intra.sc.siemens.com/storderform.pdf](http://intra.sc.siemens.com/storderform.pdf)