


The Siemens logo is displayed in a white rectangular box at the top left of the page. The word "SIEMENS" is written in a bold, teal, sans-serif font.

**SIEMENS**

The background of the advertisement is a photograph of an offshore wind farm. A large, three-bladed wind turbine is the central focus, with its tower extending from the water. The blades are a light blue color. In the distance, several other similar turbines are visible on the horizon under a blue sky with scattered white clouds. The water is a deep greenish-blue with small waves.

The world of tomorrow  
needs answers that last.

[siemens.com/answers](https://www.siemens.com/answers)

## Fast Facts



SIEMENS

A team of 60,000 aiming for the same goal.

### Energy

- Our power generation solutions help meet one-third of America's total energy needs every day.
- Our energy management systems help to ensure the continuous reliability of one-third of America's transmission grid.
- Our high voltage systems helped U.S. utilities increase capacity on existing transmission lines by up to 24%.
- We are one of America's leading providers of equipment for wind and solar power, providing solutions to help reduce industrial CO<sub>2</sub> emissions.

### Healthcare

- We are the number one application service provider in the U.S., processing over 220 million transactions daily.
- We have more than 900 clinical diagnostic tests to help improve the quality of patient care.
- Our products are found in 8 out of 10 hospitals in the U.S.



### **Industry**

- We purify one in 10 glasses of water Americans drink every day.
- Siemens solar tracking system can improve solar panel performance by 20-40% using the new Simatic S7-1200 micro controller with NREL algorithm.
- The National Customer Service Center and the Sales Support Centers receive about 2 million calls per year to answer customer questions.

### **Infrastructure & Cities**

- We are the number one provider of light rail vehicles in North America.
- Our building automation, fire safety and security solutions improve more than 35,000 North American facilities.
- We process 90% of the mail for the U.S. Postal Service.

# Table of Contents

<b>Siemens Overview</b>	<b>4</b>
<b>Proud to be Siemens</b>	<b>5</b>
<b>Sustainability</b>	<b>6</b>
<b>Federal Government</b>	<b>8</b>
<b>Dare to Ask</b>	<b>10</b>
<b>Corporate Responsibility</b>	<b>12</b>
<b>Siemens-Disney Alliance</b>	<b>14</b>
Siemens Capital Company LLC	29
Siemens Corporation	24
<b>Siemens Energy, Inc.</b>	<b>27</b>
Siemens Financial Services, Inc.	29
Siemens Foundation	30
Siemens Government Technologies, Inc.	31
<b>Siemens Healthcare Diagnostics Inc.</b>	<b>32</b>
<b>Siemens Hearing Instruments, Inc.</b>	<b>33</b>
<b>Siemens Industry, Inc.</b>	<b>34</b>
<b>Siemens Infrastructure &amp; Cities</b>	<b>37</b>
<b>Siemens Medical Solutions USA, Inc.</b>	<b>40</b>
<b>Siemens PLM Software, Inc.</b>	<b>42</b>
<b>OSRAM SYLVANIA Inc.</b>	<b>43</b>
<b>BSH Home Appliances Corporation</b>	<b>44</b>



*“What each of the employees of Siemens are involved with, is helping stake America’s claim on a clean energy future. This is what’s possible in a clean energy economy, and while it may not feel like it every day when you punch in, all the folks who work here at Siemens, I want you to understand, you are making it possible, you are blazing a trail. You are showing America our future.”*

— PRESIDENT OBAMA

[usa.siemens.com](http://usa.siemens.com)

[siemens.com/energy](http://siemens.com/energy)

[usa.siemens.com/finance](http://usa.siemens.com/finance)

[siemens-foundation.org](http://siemens-foundation.org)

[siemensgovt.com](http://siemensgovt.com)

[usa.siemens.com/diagnostics](http://usa.siemens.com/diagnostics)

[usa.siemens.com/hearing](http://usa.siemens.com/hearing)

[usa.siemens.com/industry](http://usa.siemens.com/industry)

[usa.siemens.com/infrastructure-cities](http://usa.siemens.com/infrastructure-cities)

[usa.siemens.com/healthcare](http://usa.siemens.com/healthcare)

[siemens.com/plm](http://siemens.com/plm)

[sylvania.com](http://sylvania.com)

[siemens-home.com](http://siemens-home.com)

# Siemens Overview

FY 2011

Visit Siemens USA on Facebook:  
[facebook.com/siemensusa](https://www.facebook.com/siemensusa)



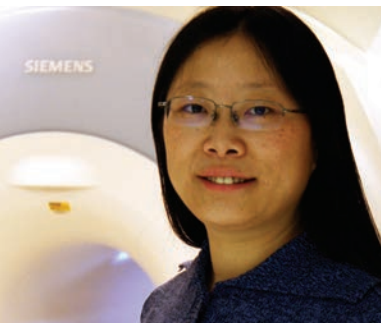
*“Our company was founded on innovation, and it’s remained the lifeblood of our business. We can afford to innovate and grow because of our tremendous financial strength. In fact, if Siemens USA were a stand-alone company, we’d be ranked in the top 130 of the latest list of Fortune 500 companies. Couple that with global operations in 190 countries, and you can see why we have the diversity and the staying power that’s reassuring to our customers... our suppliers...and our shareholders.”*

— ERIC SPIEGEL  
CEO  
U.S. Region

Siemens AG is a \$100 billion company employing 336,000 people in 190 countries, operating in the fields of industry, energy and healthcare, as well as providing infrastructure solutions for cities. For over 160 years, Siemens has stood for technological excellence, innovation, quality, reliability and internationality. Headquartered in Munich, Germany, the company is the world’s largest provider of environmental technologies with more than one-third of its total revenue stemming from green products and solutions.

Siemens in the U.S. is a \$20 billion company that provides a broad range of products and services to improve the way we live and work. Markets include automation and control, building technologies, energy and power, financial services, healthcare, hearing solutions, industrial solutions, lighting, mobility, and water technologies. Siemens in the U.S. employs 60,000 people in 700 locations in all 50 states and Puerto Rico. In fiscal 2011, 7,000 employees and \$1.3 billion were dedicated to R&D in the U.S, resulting in more than 13,000 patents. We exported \$2.0 billion in products from the U.S. in fiscal 2011 to help America maintain its competitive edge in the global marketplace.

## Proud to be Siemens



*"I'm proud to be part of Siemens as it provides me a unique opportunity to learn and grow every day in my career, no matter by a small step or a big stride."*

Li Pan  
Baltimore, MD



*"What I like the most about working for Siemens is the potential to make a difference — a really big difference."*

Dave Turner  
Colorado Springs, CO



*"Siemens' pursuit of innovation and excellence is evidence of its commitment to making a significant contribution to the world."*

Darien Palmer  
Malvern, PA



*"Knowing Siemens values are in line with my passion for exemplary customer service and support provides great personal and professional satisfaction to me."*

Adam Sears  
Seattle, WA

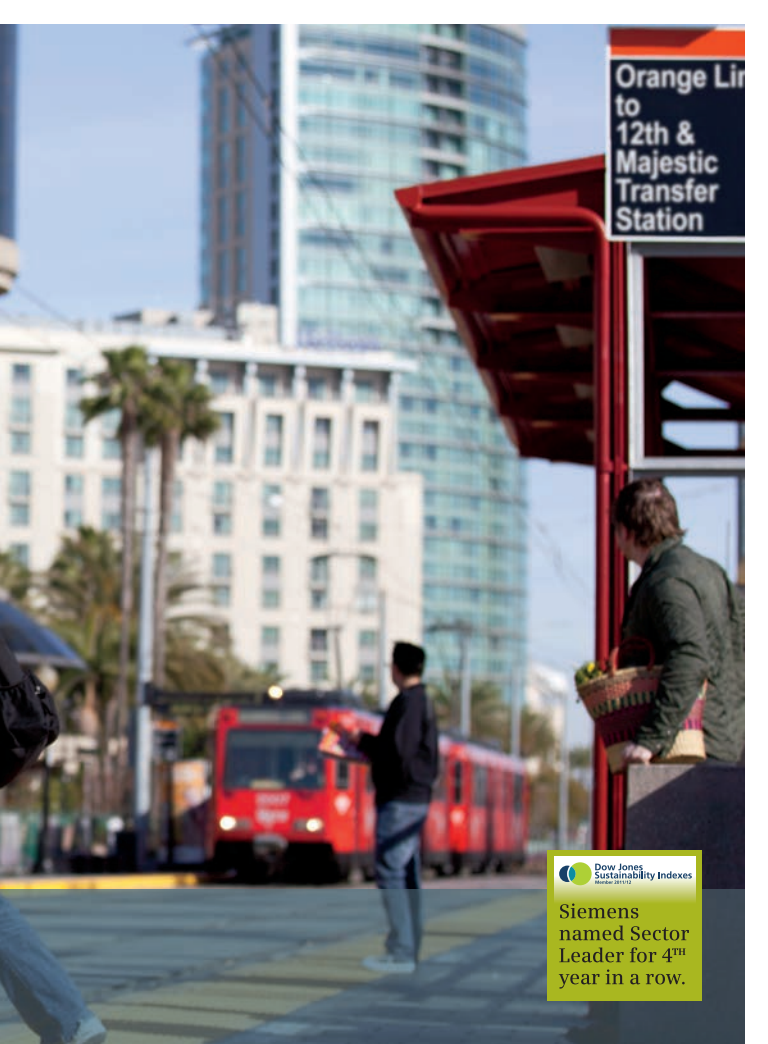


Sustainability

## Building cities worth building a future in.

Today, more than half the people on earth live in cities. In the coming years this number will continue to grow. These people are drawn by opportunity. By businesses that create new jobs and fresh ideas. By the promise of a lasting quality of life. They seek these things out not only for themselves, but for future generations as well. So our challenge is to build cities worthy of this ambition.

And much of the infrastructure that weaves these cities together comes from Siemens. Water treatment. Mobility. Building technologies. Renewable energy. No other company offers so many answers for cities.



Orange Line  
to  
12th &  
Majestic  
Transfer  
Station

 Dow Jones  
Sustainability Indexes  
March 2012

Siemens  
named Sector  
Leader for 4<sup>th</sup>  
year in a row.

We're building cities today that will be even better tomorrow. We're building cities where livability, prosperity and environmental responsibility are all interconnected. Where each leads to and strengthens the others.

We're building cities all over the world where people and businesses can thrive for years to come.



Federal Government

We provide the  
answers that make  
America work.

Current national imperatives in energy, healthcare and infrastructure require answers that solve current challenges and prepare for the future. With exceptional resources, advanced technologies, and client focus, Siemens Government Technologies, Inc. can help advance mission-critical programs for Defense, Intelligence, and Civilian agencies to manage operational demands with greater efficiency than ever before.



Streamlined processes, cross-sector capabilities and comprehensive solutions and services help meet the specialized needs of customers within the Federal marketplace in both classified and unclassified environments. Whether the challenge includes modernizing infrastructure and transportation systems, improving energy efficiency, shifting to cleaner energy, or implementing the latest advances in healthcare, we have the solutions.

Siemens is committed to helping the Federal government achieve unprecedented levels of energy efficiency and independence, enhanced service to the citizens of this nation, and a modernized infrastructure for today and the future.

A photograph of three business professionals standing in an office. On the left is a man with a mustache, wearing a dark pinstriped suit, white shirt, and light blue tie. In the center is a man with glasses, wearing a white button-down shirt. On the right is a woman with short brown hair, wearing a dark blazer over a patterned top. They are all looking towards the camera with slight smiles. The background shows a cityscape with tall buildings through a window.

Dare to Ask

There can be no answers  
without people who ask  
questions.

Siemens has ignited revolutions in energy, healthcare, industry, and infrastructure—all because of 336,000 people worldwide who dare to ask big questions every day.

We are a fully integrated technology company actively operating in more than 190 countries. We're the global market leader in many fields, offering a wide range of pioneering products for energy efficiency, industrial productivity, affordable, personalized healthcare, and intelligent infrastructure, with a growing focus on sustainability. Our environmental portfolio is already the most comprehensive in the world.



To find answers to the toughest questions of our time, we need people who dare to ask them. Open-minded, curious people who have a thorough understanding of the world we live in. Dedicated people who are determined to find answers. People who want to make a difference. Just like the 336,000 people of Siemens. And, maybe, just like you.

## Corporate Responsibility



Our corporate culture reaches beyond the office walls.

Education has always been a priority at Siemens in the U.S. and across the globe, especially in the areas of Science, Technology, Engineering and Mathematics (STEM).

The Siemens Foundation, an independent, not-for-profit organization recognized under Section 501(c)(3) of the Internal Revenue Code, is supported in large part by contributions from the Siemens U.S. sectors. The Siemens Foundation provides more than \$7 million annually in support of STEM educational initiatives in the U.S. Its signature programs, the Siemens Competition in Math, Science and Technology and Siemens Awards for Advanced Placement, reward exceptional achievement in science, math and technology.



Visit Siemens Caring Hands on Facebook:  
[facebook.com/siemenscaringhands](https://facebook.com/siemenscaringhands)

Visit Siemens Foundation on Facebook:  
[facebook.com/siemensfoundation](https://facebook.com/siemensfoundation)



The Siemens Caring Hands Foundation (SCHF) is a not-for-profit organization that is an independent, public charity recognized under Section 501(c)(3) of the Internal Revenue Code. The SCHF was established to receive, manage and allocate funds for charitable activities. Siemens Caring Hands (a program distinct from the SCHF) encourages volunteerism by providing organizational assistance and resources for Siemens employees to help them make a difference in their local communities.

Siemens works to ensure that its activities, processes and products adhere to the strictest standards of environmental safety and are compatible with sustainable development goals.

## Siemens-Disney Alliance

A blue and white monorail train is shown in the foreground, moving towards the viewer. In the background, the large, geodesic dome of Epcot's Spaceship Earth is visible against a clear blue sky. The train has a blue stripe along its side and two small lights on its front. The dome is composed of many triangular panels.


# Innovating marketing and technology alliances.

The Siemens-Disney Alliance brings together the world's leading family entertainment company and a premier global technology and infrastructure company in a 12-year strategic technology and marketing alliance that was announced in November 2005. While Walt Disney Parks and Resorts used a range of Siemens products and technologies before the alliance agreement, the sponsorship program expanded the relationship and paved the way for the two companies to broaden their technical collaborations across several platforms — including theme parks, resorts, cruise ships, and other lines of business.

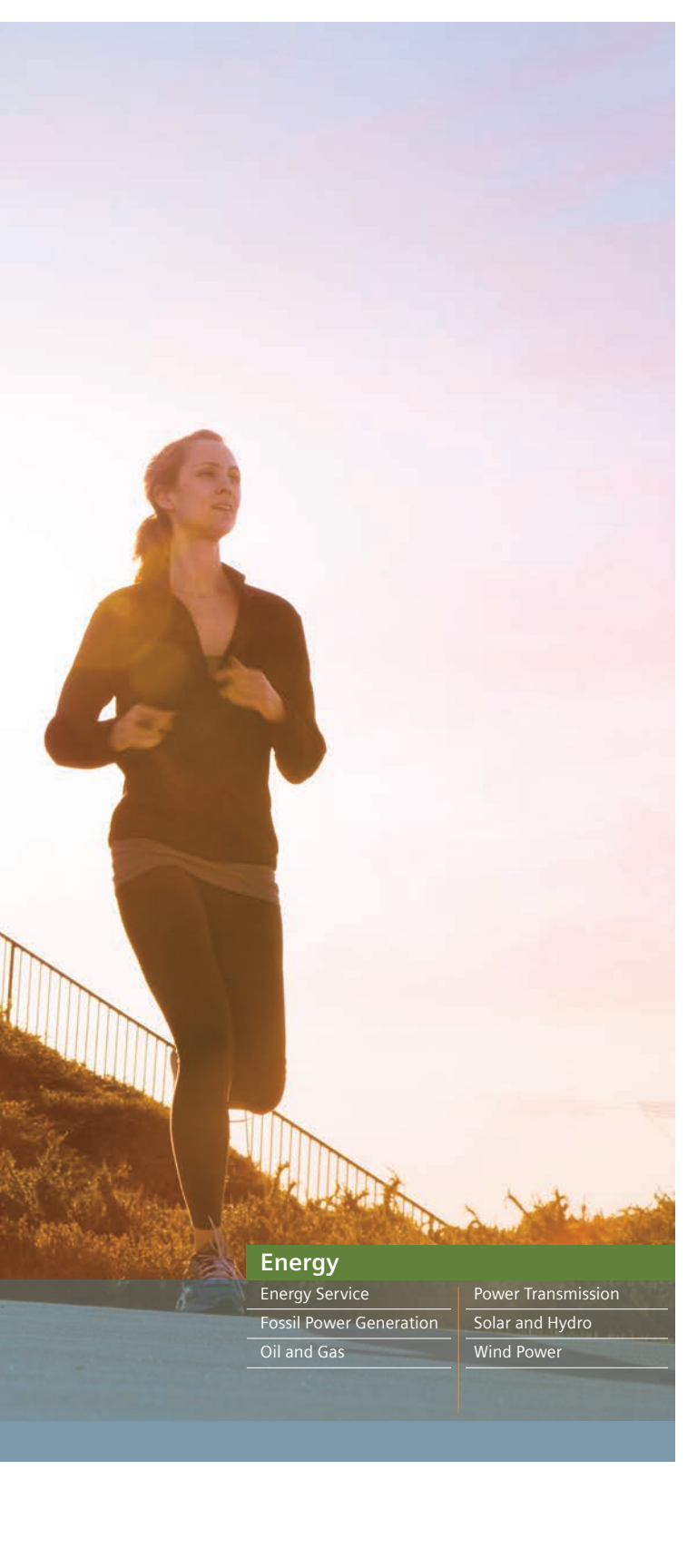


As part of the Alliance, Siemens sponsors attractions at Walt Disney World Resort (FL), Spaceship Earth and the adjoining Project Tomorrow post show. Other assets sponsored by Siemens include IllumiNations: Reflections of Earth (Epcot), Osborne Family Spectacle of Dancing Lights at Disney's Hollywood Studios (FL), a technology showcase at Innoventions (CA), and It's a Small World (CA). The Alliance sponsorship also extends to New York City with the Siemens sponsorship of the ABC Studio digital sign, located in the heart of Times Square.

Powering neighborhoods  
in a neighborly way.



Siemens answers help power  
cities while preserving their  
environment.



## Energy

Energy Service

Fossil Power Generation


Oil and Gas

Power Transmission

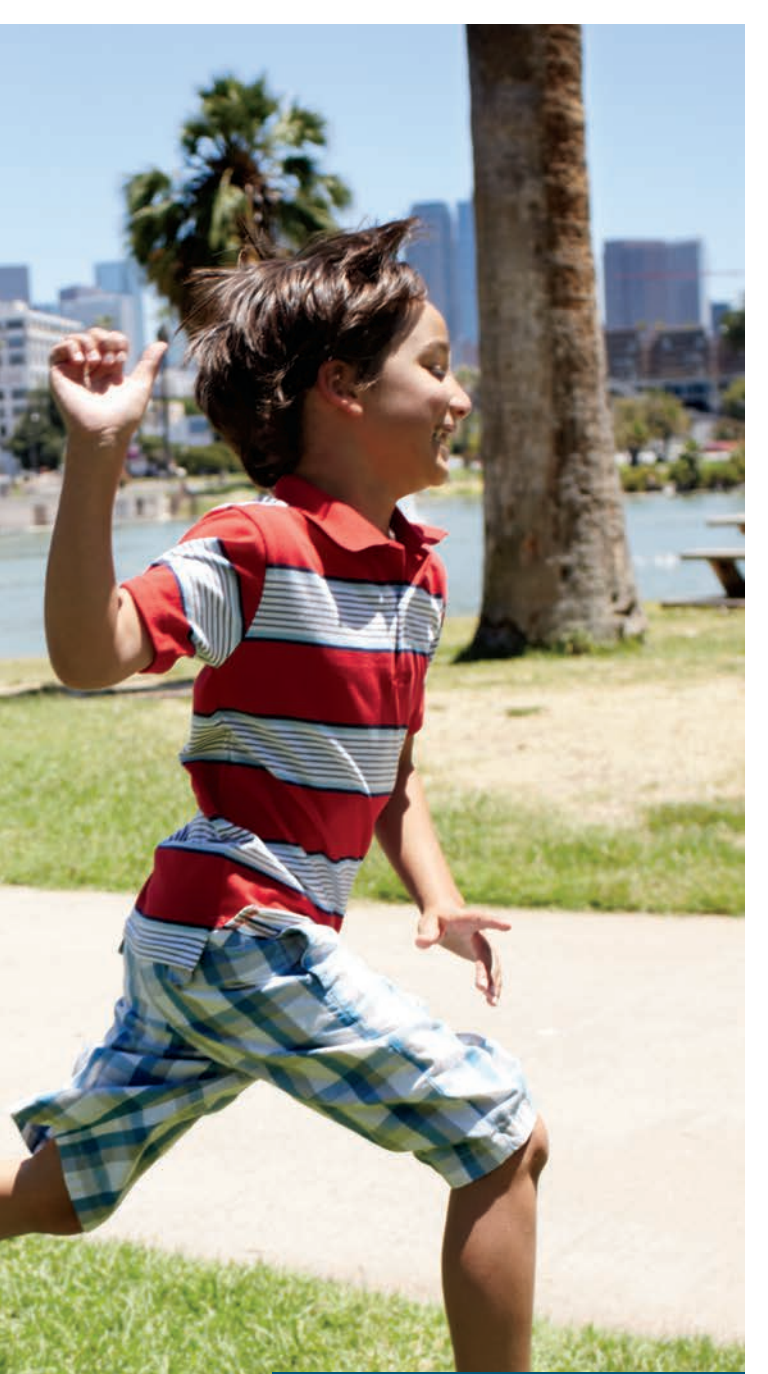
Solar and Hydro

Wind Power

Growing up healthy  
in a growing city.

A young boy with brown hair, wearing a light blue t-shirt and grey shorts, is running joyfully on a grassy path. In the foreground, the lower leg and foot of another person, wearing a black sneaker with yellow laces, are visible, suggesting they are running alongside him. The background features a calm lake, a picnic table, and a city skyline under a clear blue sky.

Siemens answers for  
healthcare help people flourish  
today — and tomorrow.



## Healthcare

Clinical Products

Customer Solutions

Diagnostics

Imaging & Therapy Systems



Life returns to  
waterways.



Siemens answers help protect  
vital waters for future generations.



## Industry

---

Customer Services

---

Drive Technologies

---

Industry Automation

---

OSRAM

---

PLM Software

A high-angle, perspective shot of a train platform. The platform has a white, curved roof that reflects the sky and surrounding environment. Below the roof, the tracks are visible, with a white tactile paving strip running parallel to the rails. A train with a dark, reflective exterior is stopped at the platform. The scene is brightly lit, suggesting a sunny day.

Every stop is a  
step forward.

Siemens answers for mobility  
help bring more jobs and  
better ways to get to them.



## Infrastructure & Cities

Building Technologies

Low and Medium Voltage

Mobility and Logistics

Rail Systems

Smart Grid

# Siemens Corporation

## Headquarters

300 New Jersey Avenue, NW  
Suite 1000  
Washington, DC 20001-2268

Tel: (202) 434-4800  
Fax: (202) 434-4839

## Corporate Offices

170 Wood Avenue South  
Iselin, NJ 08830-2726

Tel: (732) 321-3100

527 Madison Avenue  
8th Floor  
New York, NY 10022-4376

Tel: (800) SIEMENS

## Siemens-Disney Alliance

Siemens VIP Center, Epcot  
P.O. Box 10,000  
Lake Buena Vista, FL 32830

Tel: (866) 9-BASE21  
Fax: (407) 560-8015

## Cross-Sector

[usa.siemens.com](http://usa.siemens.com)

Siemens Corporation serves as the holding company for the Siemens sectors — Energy, Healthcare, Industry, and Infrastructure & Cities— their divisions and other operational legal entities in the U.S. It provides essential services to better enable responsible, profitable growth and uniformly represents the diverse Siemens businesses to the external market.

### Location

#### Siemens Corporation

300 New Jersey Avenue, NW  
Suite 1000  
Washington, DC 20001-2268  
Tel: (202) 434-4800  
Fax: (202) 434-4839

170 Wood Avenue  
Iselin, NJ 08830-2726  
Tel: (732) 321-3100

527 Madison Avenue  
8th Floor  
New York, NY 10022-4376  
Tel: (800) SIEMENS

### Summary

- Accounting and reporting
- Audit (financial and operational)
- Corporate marketing and communications
- Corporate research
- Corporate tax
- Cross-sector sales and marketing
- Event management
- Export controls and customs
- Government affairs
- Human resources
- Indirect material commodity management
- Information technology
- Intellectual property
- Legal and compliance
- Logistics and transportation
- Management consulting
- Mergers and acquisitions
- Real estate
- Security and safety
- Shared services
- Strategy and planning
- Travel management
- Vehicle management

Location	Summary
<p><b>Siemens Corporation Corporate Research</b> 755 College Road East Princeton, NJ 08540-6632 Tel: (609) 734-6500 Fax: (609) 734-6565 usa.siemens.com/research</p>	<ul style="list-style-type: none"> <li>• Automation engineering and run-time systems</li> <li>• Electronics, energy and environment</li> <li>• Image analytics and informatics</li> <li>• Imaging and visualization</li> <li>• Intelligent systems and control</li> <li>• Knowledge and decision systems</li> <li>• Processes and production</li> <li>• Software, security and systems</li> </ul>
<p><b>Siemens Corporation Corporate Research Technology-To-Business Center</b> 1995 University Avenue Suite 375 Berkeley, CA 94704-1074 Tel: (510) 665-1330 Fax: (510) 665-1331</p>	<ul style="list-style-type: none"> <li>• Early-stage business development and market validation</li> <li>• Early-stage start-up investment and development</li> <li>• Open innovation sourcing and development</li> <li>• Transfer outside-in innovations to Siemens' businesses</li> </ul>
<p><b>Siemens Corporation Global Shared Services North America</b> 3500 Quadrangle Boulevard Mail Stop AL-111 Orlando, FL 32817-8326 Tel: (407) 487-5318</p>	<ul style="list-style-type: none"> <li>• Accounting and finance services</li> <li>• Human resources services</li> <li>• Supply chain management services</li> </ul>
<p><b>Siemens Corporation Management Consulting</b> 665 Broadway Suite 700 New York, NY 10012-2302 Tel: (212) 381-2100 Fax: (212) 381-2101 siemens.com/smc</p>	<ul style="list-style-type: none"> <li>• Benchmarking</li> <li>• Growth and sales stimulation</li> <li>• Innovation</li> <li>• Mergers and acquisitions</li> <li>• Quality</li> <li>• Restructuring</li> <li>• Strategy</li> <li>• World-class processes</li> </ul>
<p><b>Siemens Corporation Real Estate</b> 170 Wood Avenue South Iselin, NJ 08830-2726 Tel: (732) 321-3180 (732) 321-3157 Fax: (732) 603-5866 usa.siemens.com/realestate</p>	<ul style="list-style-type: none"> <li>• Architectural and engineering services</li> <li>• Asset management</li> <li>• Benchmarking analysis</li> <li>• Construction</li> <li>• Due diligence</li> <li>• Facility management supervision and control</li> <li>• Governmental incentive packages</li> <li>• Lease administration</li> <li>• Project management</li> <li>• Signage and corporate design standards</li> <li>• Site selection</li> <li>• Space planning and programming</li> <li>• Special projects</li> <li>• Strategic planning</li> <li>• Sustainability and natural resource management</li> <li>• Transaction management</li> </ul>

**Location****Siemens Corporation****Siemens One**

1345 Ridgeland Parkway

Alpharetta, GA 30004-8467

Tel: (678) 867-7445

Fax: (678) 867-7450

[usa.siemens.com/siemensone](http://usa.siemens.com/siemensone)

**Summary**

- Siemens One is a sales and marketing organization that enables customers to realize the potential of integrating Siemens' products, services and solutions. By leveraging the breadth of Siemens' portfolio of innovations and technologies, the Siemens One team provides customers with tailored solutions that improve their performance and bolster their competitive position in the marketplace.
- Siemens One clients represent a broad spectrum of markets within the sectors of energy, healthcare, industry, and infrastructure including city/state and U.S. Federal government.

# Siemens Energy, Inc.

## Corporate Office

4400 Alafaya Trail  
Orlando, FL 32826-2399

Tel: (407) 736-2000  
Fax: (407) 736-3131

[siemens.com/energy](http://siemens.com/energy)

Energy

Siemens Energy is the world's leading supplier of a complete spectrum of products, services and solutions for the generation and delivery of power and for the extraction, conversion, and transport of oil and gas. The company develops and builds fossil-fueled power plants, power-generating components, solar power solutions, wind turbines, turbines for use as mechanical drives and compressors for industrial applications, air pollution control technologies, and instrumentation and control systems. It offers operations, maintenance, and management services for its own technology as well as that of other manufacturers.

### Location

**Siemens Energy, Inc.**  
4400 Alafaya Trail  
Orlando, FL 32826-2399  
Tel: (407) 736-2000  
Fax: (407) 736-3131

### Summary

- 50-Hz and 60-Hz gas and steam turbine-generators up to 1,100MW
- Air pollution control equipment
- Concentrated solar power and solar thermal power systems
- Factory and field-based service of gas and steam turbine-generators and auxiliary equipment
- Gas-insulated transmission lines
- High voltage direct current transmission solutions
- Power plant modernizations, upgrades and service contracts
- Service for boilers, heat recovery steam generators and balance of plant equipment
- Training programs
- Transformers for high voltage applications
- Turnkey fossil-fueled power plants
- Wind power turbines and wind farms
- World-class process control and power management systems

Location	Summary
<p><b>Siemens Energy, Inc. Environmental Systems and Services</b>            501 Grant Street            Pittsburgh, PA 15219-4407            Tel: (412) 562-7500            Fax: (412) 562-7308</p>	<ul style="list-style-type: none"> <li>• Air pollution control products and equipment services</li> <li>• Electrostatic precipitators</li> <li>• Fabric filters</li> <li>• Flue gas desulfurization (wet and dry)</li> <li>• NO<sub>x</sub> and ancillary products</li> </ul>
<p><b>Siemens Energy, Inc. High Voltage Systems, Transformers and Service Solutions</b>            7000 Siemens Road            Wendell, NC 27591-8309            Tel: (919) 365-2200            Fax: (919) 365-1112</p>	<p><b>High Voltage Systems</b></p> <ul style="list-style-type: none"> <li>• Flexible Alternating Current Transmission Systems (FACTS)</li> <li>• Gas Insulated Switchgear (GIS)</li> <li>• Gas Insulated transmission Lines (GIL)</li> <li>• High Voltage Direct Current (HVDC) transmission systems</li> <li>• Power system studies</li> <li>• Series capacitors</li> <li>• Static Var Compensation (SVC)</li> </ul> <p><b>Transformers and Service Solutions</b></p> <ul style="list-style-type: none"> <li>• Breaker retrofits</li> <li>• Equipment life extension services</li> <li>• Installation and commissioning</li> <li>• Modernization</li> <li>• Power equipment repair and maintenance</li> <li>• Refurbishment</li> </ul>
<p><b>Siemens Energy, Inc. Instrumentation, Controls and Electrical</b>            1345 Ridgeland Parkway            Suite 116            Alpharetta, GA 30004-5223            Tel: (678) 256-1500            Fax: (678) 256-1556</p>	<ul style="list-style-type: none"> <li>• Controls for turbines/rotating equipment</li> <li>• Diagnostic and electrical solutions for improving plant availability</li> <li>• Energy management software</li> <li>• Power plant automation systems</li> <li>• Process optimization solutions</li> <li>• Simulation tools</li> </ul>
<p><b>Siemens Energy, Inc. Oil, Gas and Industrial Applications</b>            10730 Telge Road            Houston, TX 77095-5002            Tel: (281) 856-4400            Fax: (281) 856-4499</p>	<ul style="list-style-type: none"> <li>• Gas and steam turbine-generators for a range of industrial applications</li> <li>• Industrial power plants up to 150MW</li> <li>• Process safety software solutions for the oil and gas industry</li> <li>• Steam turbine-generators for solar thermal applications</li> <li>• Turbo-compressors for petrochemical, refining, oil and gas, and chemical applications</li> </ul>
<p><b>Siemens Energy, Inc. Photovoltaic Solar Power</b>            2303 Camino Ramon            Suite 100            San Ramon, CA 94523-1176            Tel: (925) 913-4101            Fax: (925) 867-4621</p>	<ul style="list-style-type: none"> <li>• Engineering, procurement and construction of utility-scale photovoltaic solar power systems</li> </ul>
<p><b>Siemens Energy, Inc. Transmission Products</b>            444 Highway 49 South            Richland, MS 39218-9442            Tel: (601) 939-0550            Fax: (601) 939-3606</p>	<ul style="list-style-type: none"> <li>• Circuit switchers</li> <li>• Power circuit breakers</li> <li>• Surge arresters</li> <li>• Voltage regulators</li> </ul>

# Siemens Financial Services, Inc.

## Corporate Office

170 Wood Avenue South  
Iselin, NJ 08830-2726

Tel: (800) 327-4443  
Fax: (732) 590-6614

[usa.siemens.com/finance](http://usa.siemens.com/finance)

Cross-Sector

Siemens Financial Services offers a comprehensive set of working capital and long-term financing solutions that are tailored to fit the specific borrowing needs of energy, healthcare, industry, and infrastructure customers.

### Location

#### Siemens Financial Services, Inc.

170 Wood Avenue South  
Iselin, NJ 08830-2726  
Tel: (800) 327-4443  
Fax: (732) 590-6614

### Summary

- Asset-based lending
- Commercial equipment finance
- Corporate finance solutions
- Equity portfolio and project management
- Export financing
- Junior capital solutions
- Municipal financing with tax-exempt rates and flexible terms
- Performance-based service contract financing
- Project and acquisition financing
- Senior secured debt
- Trade finance
- Venture capital

# Siemens Capital Company LLC

## Corporate Office

170 Wood Avenue South  
Iselin, NJ 08830-2726

Tel: (732) 590-2500  
Fax: (732) 590-2501

Cross-Sector

Siemens Capital Company represents the Treasury, Financing and Investment Management Services and Pension groups of Siemens Financial Services, Inc. in North and Latin America and provides Siemens entities with treasury, banking, accounting, working capital finance, pension management related products and services. The company helps ensure that Siemens meets its financial obligations and offers cost-efficient financing solutions to affiliated entities.

### Location

#### Siemens Capital Company LLC

170 Wood Avenue South  
Iselin, NJ 08830-2726  
Tel: (732) 590-2500  
Fax: (732) 590-2501

### Summary

- Banking and treasury services
- Centralized cash management
- Financial risk management
- Inter-company financing and accounting services
- Payables financing (supply chain finance)
- Payment systems support
- Pension fund management and pension benefits accounting
- Receivables purchasing (Siemens credit warehouse)

# Siemens Foundation

## Corporate Office

170 Wood Avenue South  
Iselin, NJ 08830-2726

Tel: (877) 822-5233  
Fax: (732) 603-5890

## Cross-Sector

[siemens-foundation.org](http://siemens-foundation.org)

The Siemens Foundation, an independent, not-for-profit organization recognized under Section 501(c)(3) of the Internal Revenue Code and founded in 1998, is supported in large part by contributions from the Siemens U.S. sectors. The Foundation's programs are shaped by a culture of innovation, research, and a commitment to educational advancement. The Foundation's programs engage America's future workforce in activities that stimulate interest in the fields of science, technology, engineering, and mathematics.

## Summary

The Siemens Competition in Math, Science and Technology is the nation's premier research competition for high school students. Administered in partnership with the College Board, the competition provides high school students and schools an opportunity to achieve national recognition for original math, science and technology research projects. The Siemens Competition partners with the following six universities for its regional competitions:

- California Institute of Technology, Pasadena, CA
- Carnegie Mellon University, Pittsburgh, PA
- Georgia Institute of Technology, Atlanta, GA
- Massachusetts Institute of Technology, Cambridge, MA
- University of Notre Dame, South Bend, IN
- The University of Texas, Austin, TX

The Siemens Awards for Advanced Placement (AP), administered in partnership with the College Board, provide scholarships and awards to students and teachers in every state, recognizing excellence in the Advanced Placement program.

The Siemens We Can Change the World Challenge is a national K-12 sustainability education initiative aligned to state education standards and uniquely tailored to match students' growing comprehension abilities throughout their school-aged years. By partnering with Discovery Education and the National Science Teachers Association, the Siemens Foundation serves as a pioneer in empowering teams of students, under the mentorship of an adult supervisor, to use scientific principles to improve their classrooms, their communities and their world.

Siemens Science Day is an innovative program designed to captivate young students' interest in math, science, and technology through hands-on science activities. Partnering with Discovery Education provides an instant platform to reach today's 21st century learners with an engaging curriculum that inspires and informs today's youth.

The Siemens STEM Academy is an online community designed exclusively to foster achievement in Science, Technology, Engineering, and Math (STEM) through the collaboration of STEM educators, and sharing of "best practices."

# Siemens Government Technologies, Inc.

## Corporate Office

2231 Crystal Drive  
Suite 700  
Arlington, VA 22202-3724

Tel: (703) 480-8901  
Fax: (571) 431-7565

siemensgovt.com

Cross-Sector

Siemens Government Technologies is a federally-compliant U.S. organization structured to provide answers for some of our nation's most challenging issues within the Federal space in energy, healthcare, industry and infrastructure. The company provides Siemens' innovative products, technologies and services to meet the needs of Federal customers such as the Federal government, Engineering, Procurement and Construction Firms (EPCs), Federal Prime Contractors, and others. Streamlined processes, cross-sector capabilities and comprehensive solutions and services help meet the specialized demands of customers within the Federal marketplace.

## Summary

### Energy

- Power generation and distribution
- Renewables
- Transmission

### Healthcare

- Clinical technology
- Healthcare IT
- Imaging technology
- Laboratory diagnostics

### Industry

- Industrial controls and automation
- Motors, drives and propulsion systems
- Product Lifecycle Management (PLM) sales and consulting services
- Water

### Infrastructure & Cities

- Building controls and automation
- Data center power and automation solutions and services
- Electric vehicle infrastructure
- Energy Savings Performance Contracting (ESPC)
- Fire and life detection, suppression and alarm systems
- Integrated security solutions
- Lighting solutions and services
- Low and medium voltage power products
- Mobility solutions, integrated logistics and baggage handling
- Rolling stock and rail solutions
- Smart/microgrids

### Lifecycle Support/Service

- Call center and technical support/dispatch
- Government property management
- Preventive and predictive maintenance
- Supply chain management
- Warehouse and distribution services

# Siemens Healthcare Diagnostics Inc.

## Corporate Office

511 Benedict Avenue  
Tarrytown, NY 10591-5005

Tel: (914) 631-8000

## Healthcare

[usa.siemens.com/diagnostics](http://usa.siemens.com/diagnostics)

Siemens Healthcare Diagnostics is taking a leadership role in developing the future of healthcare by providing clinicians with the vital information they need for the accurate diagnosis, treatment, and monitoring of patients. Our comprehensive portfolio of performance-driven solutions, used by clinical laboratories and physician office laboratories to perform blood and urine tests, is designed to streamline workflow, enhance operational efficiency, and support improved patient care.

### Location

**Siemens Healthcare  
Diagnostics Inc.  
Chemistry, Automation,  
Immunoassay and Diagnostics  
IT Business Unit**

511 Benedict Avenue  
Tarrytown, NY 10591-5005  
Tel: (914) 631-8000

700 GBC Drive  
Newark, DE 19702-2468  
Tel: (302) 631-6460

### Summary

- Chemistry
- Diagnostics IT
- Immunoassay
- Integrated systems
- Laboratory automation
- The Hemostasis, Hematology, and Specialty Business Unit is located in Marburg, Germany and manufactures instruments and assays which serve the U.S. and global markets

**Siemens Healthcare  
Diagnostics Inc.  
Molecular and Microbiology  
Business Unit**

725 Potter Street  
Berkeley, CA 94710-2722  
Tel: (510) 982-4000

- Microbiology
- Molecular diagnostics

**Siemens Healthcare  
Diagnostics Inc.  
Point of Care (POC)  
Business Unit**

2 Edgewater Drive  
Norwood, MA 02062-4637  
Tel: (781) 762-2146

- Blood gas
- Diabetes
- POC Informatics
- Urinalysis

# Siemens Hearing Instruments, Inc.

## Corporate Office

10 Constitution Avenue  
Mail: P.O. Box 1397  
Piscataway, NJ 08855-1397

Tel: (732) 562-6600  
(800) 766-4500  
Fax: (732) 562-6640

[usa.siemens.com/hearing](http://usa.siemens.com/hearing)

Healthcare

Siemens Hearing Instruments is a global market leader in innovative hearing instruments and accessories. The company's passion for innovation has been at the core of its business for over 130 years. Siemens Hearing Instruments offers the industry's most comprehensive portfolio of hearing aids enhanced with exclusive BestSound™ Technology for the utmost in speech intelligibility, feedback cancellation, learning and more. It continuously strives to be the partner of choice for hearing care professionals by offering professional marketing consulting services, e-business solutions, educational development, and advanced workflow solutions. As the industry leader in research, technology, and manufacturing, the company is helping millions of people each day enjoy every decibel of life.

### Location

**Siemens Hearing Instruments, Inc.**  
10 Constitution Avenue  
Mail: P.O. Box 1397  
Piscataway, NJ 08855-1397  
Tel: (732) 562-6600  
(800) 766-4500  
Fax: (732) 562-6640

### Summary

- Hearing aids, batteries and accessories
- Marketing services
- Practice/office management software

# Siemens Industry, Inc.

## Corporate Office

3333 Old Milton Parkway  
Alpharetta, GA 30005-4437

Tel: (770) 751-2000  
(800) 964-4114  
Fax: (770) 740-3699

## Industry Sector

[usa.siemens.com/industry](http://usa.siemens.com/industry)

Siemens' Industry Sector is America's leading supplier of industrial and production solutions. With integrated automation technologies, drive trains, and comprehensive industry-specific expertise, Siemens increases the productivity, efficiency, and flexibility of its customers. Industry's focus on the needs of its customers in specific markets enables an end-to-end offering from a single source—ranging from individual products and solutions to complete system integration and services.

### Location

**Siemens Industry, Inc.**  
**Industry Sector**  
**Customer Services Division**  
100 Technology Drive  
Alpharetta, GA 30005-3900  
Tel: (770) 740-3000  
(800) 241-4453  
Fax: (770) 740-3699

### Summary

- Arc flash studies
- Automation and integration services
- Construction, installation, and commissioning services
- Consulting, asset management and service contracting
- Disaster recovery services
- Engineering and field services
- Exchange services
- Fabrication and welding services
- Field services
- Front-end engineering and design
- Full lifecycle services on all products
- In-house nickel and chrome plating
- In-plant laser measurement and millwright services
- Integral plant maintenance programs
- Mechanical machining of components
- Modernization/upgrade programs
- Motors and drive management services
- Power delivery service agreements
- Remote condition monitoring and predictive maintenance
- Service contracts (membrane services, Build-Own-Operate (BOO), lab, odor control services, disinfection services)
- Spare parts
- Temporary equipment services
- Upgrade and retrofit services

**Siemens Industry, Inc.**  
**Industry Sector**  
**Drive Technologies Division**  
100 Technology Drive  
Alpharetta, GA 30005-3900  
Tel: (800) 241-4453

- Application-specific gear units
- Couplings
- Energy saving manufacturing applications
- FLENDER™ standard and custom gear units
- Geared motors, gears and generators for wind turbines

**Location**

4620 Forest Avenue  
Cincinnati, OH 45212-3396  
Tel: (513) 841-3100

950 Tollgate Road  
Elgin, IL 60123-9313  
Tel: (847) 931-1990

390 Kent Avenue  
Elk Grove Village, IL 60007-1902  
Tel: (800) 879-8079

500 Hunt Valley Road  
New Kensington, PA 15068-7060  
Tel: (724) 339-9500

100 Sagamore Hill Road  
Pittsburgh, PA 15239-2919  
Tel: (724) 339-9500

**Summary**

- High HP integrated drive train applications
- Hybrid drives for transportation
- Industrial, special and traction drives and motors
- NEMA, IEC and above NEMA motors
- Premium efficient, severe duty, API, and explosion-proof motors
- Products for pump, fan, and compressor OEMs
- ROBICON Perfect Harmony™ variable speed drives (MV)
- Servo and induction motors
- SIMOTION™ control systems for positioning and production machines
- SINAMICS™ low voltage industrial AC, DC and general purpose drives
- SINUMERIK™ CNC systems
- Specialty expertise in cement, mining, oil and gas, marine, pulp and paper, fossil and nuclear power, and renewable power applications
- Standard products and engineered-to-order power conversion solutions

**Siemens Industry, Inc.****Industry Sector****Industry Automation Division**

734 West North Carrier Parkway  
Grand Prairie, TX 75050-1001  
Tel: (800) 964-4114

5300 Triangle Parkway  
Norcross, GA 30092-2538  
Tel: (800) 964-4114

1201 Sumneytown Pike  
Spring House, PA 19477-1019  
Tel: (215) 646-7400

5555 New King Street  
Troy, MI 48098-2616  
Tel: (800) 964-4114

181 Thorn Hill Road  
Warrendale, PA 15086-7527  
Tel: (724) 772-0044  
Fax: (724) 772-1360

**Automation Systems**

- Application engineering services
- Human-machine interfaces
- Hybrid control systems
- Industrial communication, PCs and software
- Loop controllers
- Machine safety systems
- Manufacturing execution systems
- Microautomation
- PC-based automation
- Power supplies
- Process automation systems
- Programmable logic controllers
- Safety systems
- Supervisory Control and Data Acquisition (SCADA) systems
- Totally integrated automation
- Tracking and tracing solutions for manufacturing and retail

**Control Components and Systems Engineering**

- Customer training
- Explosion-proof boxes
- IEC and NEMA products
- Motor controls center
- NEMA controls
- Solar Solutions (PV inverters for commercial and utility markets)

## Summary

### Sensors and Communication

- Continuous gas analyzers
- Customer training
- Laser diode spectrometer
- Magnetic flow meters
- Mass flow meters
- Pneumatic instruments
- Point level sensors
- Pressure transmitters
- Process analytics design engineering
- Process gas chromatographs
- Process instrumentation and analytics
- Process protection instruments
- Radar level instruments
- Single loop controllers
- Temperature transmitters
- Ultrasonic flow meters
- Valve positioners
- Vortex flow meters
- Weighing and feeding equipment

### Vertical Markets

- Industry suites and Siemens portfolio management for automotive, chemical, food and beverage/ pharmaceutical and solar/glass manufacturing

### Water Technologies

- Aquatic water
- Corrosion and biofouling protection
- Drinking water treatment
- Groundwater treatment
- High purity water
- Industrial process water
- Odor and vapor control
- Oil and gas produced water
- Sludge and biosolids treatment
- Wastewater treatment
- Water recycle and reuse

---

### Siemens Industry, Inc.

#### Industry Sector

#### Metals Technologies

100 Technology Drive

Alpharetta, GA 30005-3900

Tel: (770) 740-3000

(800) 241-4453

Fax: (770) 740-3699

501 Technology Drive

Canonsburg, PA 15317-9585

Tel: (877) 418-7659

(724) 514-8500

40 Crescent Street

Worcester, MA 01605-2404

Tel: (877) 418-7659

(724) 514-8500

- Electrical automation and mechatronic solutions
- Engineering, manufacturing, project management
- Expertise in iron, steel and aluminum
- Metallurgical services center
- MORGOIL® bearings, guides, and spares
- New development platform for mining truck solutions
- Project operations
- Total design, engineering, manufacturing, installation and service of metals industry equipment and technologies including casting, metals automation, process lines, rolling mills, and steelmaking

## Infrastructure & Cities Sector

[usa.siemens.com/infrastructure-cities](http://usa.siemens.com/infrastructure-cities)

Siemens' Infrastructure & Cities Sector offers solutions to make cities of all sizes more sustainable, competitive, and places where both people and businesses can thrive. Their portfolio includes complete traffic and transportation systems, intelligent logistics, efficient energy supply, and environmentally compatible building technologies, and provides solutions that modernize the way power is transmitted and distributed to enhance the smart consumption of electricity.

### Location

**Siemens Industry, Inc.**  
**Infrastructure & Cities Sector**  
**Building Technologies Division**  
1000 Deerfield Parkway  
Buffalo Grove, IL 60089-4513  
Tel: (847) 215-1000

### Summary

#### Building Automation

- Alternative and renewable energy
- Building automation and control, certification and performance services
- Energy information management
- Equipment optimization programs
- Equipment retrofits and upgrades
- Financial options
- Integration of building automation systems and equipment
- Remote support services
- Smart consumption programs
- Water conservation programs

#### Control Products and Systems

- Apogee® and Talon® control systems and components
- Retail and commercial systems
- Sensors and combustion controls
- Valves and actuators
- Variable frequency drives
- Wireless networks

#### Fire Safety and Security

- Detection (fire, smoke, CO<sub>2</sub>, specialty)
- Emergency voice evacuation systems
- Fire and life safety systems
- Fire control panels
- Fire life safety and security central monitoring and management
- Fire life safety design assistance
- Fire management stations
- Fire suppression and air sampling
- Fire system migration lifecycle solutions
- Integrated security solutions
- Managed security services
- Remote security management
- SiPass integrated access control
- Siveillance™ SiteIQ Wide Area and Vantage command and control
- Sygnal® mass notification systems
- Video verification and monitoring

**Location****Siemens Industry, Inc.  
Infrastructure & Cities Sector  
Low and Medium Voltage  
Division**

5400 Triangle Parkway  
Norcross, GA 30092-2540  
Tel: (800) 964-4114

444 Highway 49 South  
Richland, MS 39218-9442  
Tel: (601) 939-0550  
Fax: (601) 939-3606

7000 Siemens Road  
Wendell, NC 27591-8309  
Tel: (919) 365-2200  
Fax: (919) 365-1112

**Summary**

- AFCI and GFCI circuit protection
- Circuit protection devices (power and molded case circuit breakers)
- Circuit switchers
- Lighting control
- Low Voltage (LV) switchgear
- Medium Voltage (MV) switchgear
- Murray electrical products
- MV motor control and breakers
- Panelboards/switchboards
- Power circuit breakers, monitoring and control systems
- Reclosers
- Residential electrical distribution
- Safety switches and OEM switches
- Structured wiring and home control
- Surge arresters
- Totally integrated power
- Voltage regulators

**Siemens Industry, Inc.  
Infrastructure & Cities Sector  
Mobility and Logistics Division**

1401 Nolan Ryan Expressway  
Arlington, TX 76011-4907  
Tel: (817) 436-7000  
(800) 433-5175  
Fax: (817) 436-7476

498 Seventh Avenue  
16th Floor  
New York, NY 10018-6798  
Tel: (212) 672-4000  
Fax: (212) 672-4001

371 Bel Marin Keys Boulevard  
Suite 200  
Novato, CA 94949-5662  
Tel: (415) 884-3000  
Fax: (415) 884-4800

**Complete Transportation**

- City-wide control systems
- Electric vehicle infrastructure
- Intelligent traffic solutions
- Intelligent transportation services
- LED traffic retrofits
- Park and eCharge
- Traffic and streetlight maintenance
- Traffic signaling products

**Infrastructure Logistics**

- After-sales services
- Baggage handling systems
- Complete systems and solutions for postal automation
- Forwarding systems
- Logistics software
- Operations and maintenance
- Parcel and cargo sorting systems and solutions
- Reading and video coding systems

**Rail Automation**

- Passenger information systems
- Rail communications systems, IT solutions, operation control centers, signaling and safety systems for main-line and mass transit
- Train control systems
- Yard management and control solutions

**Siemens Industry, Inc.  
Infrastructure & Cities Sector  
Rail Systems Division**

7464 French Road  
Sacramento, CA 95828-4600  
Tel: (916) 681-3000  
(800) 743-6367  
Fax: (916) 681-3006

**Customer Service**

- Bogie service center
- Chartered rail solutions
- Complete design/build turnkey systems
- Consultative services
- Maintenance solutions
- Managed inventory
- Retrofits and refurbishments
- Spare parts
- Upgrades

**Siemens Industry, Inc.  
Infrastructure & Cities Sector  
Smart Grid Division**

4920 Westway Park Boulevard  
Suite 150

Houston, TX 77041-2008

Tel: (281) 497-2422

Fax: (281) 497-0316

300 Oswego Point Drive  
Suite 106

Lake Oswego, OR 97034-3229

Tel: (503) 675-3600

Fax: (866) 804-0478

10900 Wayzata Boulevard  
Suite 400

Minnetonka, MN 55305-5602

Tel: (952) 607-2804

Fax: (952) 607-2252

1350 Shorebird Way  
Mountain View, CA 94043-1338

Tel: (650) 694-5151

Fax: (650) 694-5111

400 State Street  
Schenectady, NY 12305-1058

Tel: (518) 395-5000

Fax: (518) 346-2777

7000 Siemens Road  
Wendell, NC 27591-8309

Tel: (919) 365-2200

Fax: (919) 365-2128

**High Speed Rail**

- Diesel multiple unit vehicles
- Electrical multiple unit vehicles
- High speed rail vehicles

**Locomotives and Components**

- Diesel electrification
- Electric locomotives
- Heavy rail vehicles
- Propulsion systems and bogies

**Metro, Coaches, and Light Rail**

- Light rail vehicles
- Passenger coaches
- Street cars

**Energy Automation**

- Control centers for transmission and distribution grids
- Demand response solutions
- Distribution automation and intelligent feeders
- Electricity market management systems
- Enterprise modeling software for utilities
- Meter data management
- Microgrid systems
- Protective relays
- RTUs
- Smart grid IT integration services
- Substation automation
- Supervisory Control and Data Acquisition (SCADA) for industrial sites

**Rail Electrification**

- Contact line systems supply
- Power control system SCADA
- System design and the calculation of railway electrification systems
- Traction power supply systems
- Truck trolley assist systems for mining

**Services**

- Open access transmission strategy and planning
- Power system analysis consulting and software (PSS®, MUST, TPLAN™, SINCAL)
- Smart grid communications analysis services, planning, consulting, and integration
- Smart metering and meter data management integration services
- Transmission and distribution asset management, asset testing, diagnostics, modernization, monitoring, reliability analysis, retrofit, and system planning
- Wind farm operations and maintenance
- Wind power modeling

# Siemens Medical Solutions USA, Inc.

## Corporate Office

51 Valley Stream Parkway  
Malvern, PA 19355-1406

Tel: (610) 448-4500  
(888) 826-9702  
Fax: (610) 448-2554

## Healthcare

[usa.siemens.com/healthcare](http://usa.siemens.com/healthcare)

Siemens Healthcare is one of the world's largest suppliers to the healthcare industry. The company is a renowned medical solutions provider with an innovative portfolio of advanced imaging, laboratory diagnostics, therapy systems, and healthcare IT. Siemens Healthcare focuses on strategies to increase efficiency and quality of care, while simultaneously reducing costs. Guided by a vision of affordable, personalized healthcare, the company arms providers with innovative tools to make sounder decisions and achieve higher quality outcomes with greater efficiencies and higher return on investment.

### Location

#### Siemens Medical Solutions USA, Inc.

51 Valley Stream Parkway  
Malvern, PA 19355-1406  
Tel: (610) 448-4500  
Fax: (610) 448-2554

### Summary

#### Clinical Products Division

- Digital radiology/fluoroscopy
- Mammography
- Mobile X-ray/Surgical C-arm systems
- Ultrasound
- Urology/lithotripsy systems

#### Customer Solutions Division

- Application Service Provider (ASP)
- Customer service
- Health services and Healthcare Information Technology (HIT)

#### Imaging & Therapy Systems Division

- Accessory solutions
- Angiography and interventional X-ray systems
- Cardiology labs
- Computed Aided Detection (CAD)
- Computed Tomography (CT)
- Magnetic Resonance Imaging (MRI)
- Molecular Imaging (MI)
- Oncology Care Systems (OCS)
- Picture Archiving and Communications Systems (PACS) and Networking
- Positron Emission Tomography (PET)
- Refurbished systems
- Single Photon Emission Computed Tomography (SPECT)

#### Siemens Medical Solutions USA, Inc.

#### Customer Service Center

110 MacAlison Court  
Cary, NC 27511-7912  
Tel: (800) 888-7436  
Fax: (919) 319-2680

- Consulting and IT services
- Education
- Product support
- Uptime services

Location	Summary
<p><b>Siemens Medical Solutions USA, Inc.</b>  <b>Financial Services</b>            51 Valley Stream Parkway            Malvern, PA 19355-1406            Tel: (888) 826-9702            Fax: (610) 448-1534</p>	<ul style="list-style-type: none"> <li>• Fair market value leases</li> <li>• Finance leases and Siemens Healthcare product financing</li> <li>• Leasehold improvement financing</li> <li>• Operating leases</li> <li>• Software financing</li> <li>• Tax-exempt leases</li> <li>• Technology refresh program</li> <li>• Working capital line of credit</li> </ul>
<p><b>Siemens Medical Solutions USA, Inc.</b>  <b>Healthcare Information Technology</b>            51 Valley Stream Parkway            Malvern, PA 19355-1406            Tel: (610) 219-6300            Fax: (610) 219-3124</p>	<ul style="list-style-type: none"> <li>• Application Service Provider (ASP)</li> <li>• Clinical information systems</li> <li>• Computer-based patient records</li> <li>• Customer services for applications support, consulting, installation, Integrated Service Management (ISM), product service delivery, remote diagnostics and repair, service training and development, and technical support</li> <li>• Electronic Data Interchange (EDI)</li> <li>• Financial systems</li> <li>• Healthcare information systems</li> <li>• Infrastructure technology</li> <li>• Networking services</li> <li>• Outsourcing</li> <li>• Physician practice management</li> <li>• Systems integration solutions</li> <li>• Workflow management</li> </ul>
<p><b>Siemens Medical Solutions USA, Inc.</b>  <b>Molecular Imaging</b>            2501 North Barrington Road            Hoffman Estates, IL 60195-2061            Tel: (847) 304-7700            Fax: (847) 304-7707</p> <p>810 Innovation Drive            Knoxville, TN 37932-2562            Tel: (865) 218-2000            Fax: (865) 218-3000</p>	<ul style="list-style-type: none"> <li>• Biomarker solutions (Cyclotrons, FDG distribution, chemistry modules)</li> <li>• Clinical hybrid imaging (SPECT-CT and PET-CT)</li> <li>• Positron Emission Tomography (PET)</li> <li>• Preclinical systems (PET, SPECT, CT)</li> <li>• Single Photon Emission Computed Tomography (SPECT)</li> </ul>
<p><b>Siemens Medical Solutions USA, Inc.</b>  <b>Oncology Care Systems</b>            4040 Nelson Avenue            Concord, CA 94520-1200            Tel: (925) 246-8200            Fax: (925) 246-8284</p>	<ul style="list-style-type: none"> <li>• Image-guided radiation therapy</li> <li>• Oncology information management system</li> <li>• Radiation therapy treatment systems (linear accelerators)</li> <li>• Simulation systems</li> <li>• Treatment planning</li> </ul>
<p><b>Siemens Medical Solutions USA, Inc.</b>  <b>Ultrasound Systems</b>            1230 Shorebird Way            Mountain View, CA 94043-1344            Tel: (650) 969-9112            Fax: (650) 968-1833</p> <p>22010 SE 51st Street            Issaquah, WA 98027-7298            Tel: (800) 367-3569            Tel: (425) 392-9180</p>	<ul style="list-style-type: none"> <li>• Cardiology</li> <li>• Gastroenterology</li> <li>• OB/GYN</li> <li>• Portable ultrasound solutions</li> <li>• Three- and four-dimensional ultrasound imaging</li> </ul>

# Siemens PLM Software, Inc.

## Corporate Office

5800 Granite Parkway  
Suite 600  
Plano, TX 75024-6612

Tel: (972) 987-3000  
Fax: (972) 987-3397

## Industry

[siemens.com/plm](http://siemens.com/plm)

Siemens PLM Software, part of the Industry Sector, is a leading global provider of Product Lifecycle Management (PLM) software and services with 6.7 million licensed seats and 69,500 customers worldwide. The company works collaboratively with companies around the world to deliver open software solutions that help them turn more ideas into successful products.

## Summary

### Digital Lifecycle Management

- 3D product visualization
- Compliance management
- Global/community collaboration
- Maintenance, Repair and Overhaul (MRO)
- Mechatronics process management
- Portfolio, program and project management
- Product and process knowledge management
- Supplier relationship management
- System engineering and requirements management

### Digital Manufacturing

- Assembly planning and validation
- Manufacturing process management
- Part planning and validation
- Plant design and optimization
- Production and quality management
- Robotics and automation planning

### Digital Product Development (CAD/CAM/CAE)

- Electromechanical systems design and simulation
- Engineer to order solutions
- Engineering process management
- Industrial design and styling
- Machining
- Mechanical design and simulation
- Package design
- Tooling and fixture design

### Open Software Solutions and Standards

- 3D geometric modeling
- 3D shape search technology
- Collaboration
- Data sharing and interoperability
- Parametric design tools
- Visualization

### PLM for Mid-market Manufacturers

- 3D Computer-Aided Design (CAD)
- Computer-Aided Manufacturing (CAM)
- Finite Element Modeling (FEM)
- Product Data Management (PDM)

# OSRAM SYLVANIA Inc.

## Corporate Office

100 Endicott Street  
Danvers, MA 01923-3623

Tel: (978) 777-1900  
Fax: (978) 750-2152

sylvania.com

Industry

SYLVANIA is a leader in lighting solutions that feature innovative design and energy-saving technology. The company sells products for homes, businesses and vehicles primarily under the SYLVANIA brand name, and also under the OSRAM brand.

### Location

#### **OSRAM SYLVANIA Inc. Engineering**

54 Cherry Hill Drive  
Danvers, MA 01923-2575  
Tel: (978) 777-1900  
Fax: (978) 750-3903

### Summary

- Light management systems
- Lighting ballasts
- Solid state lighting

#### **OSRAM SYLVANIA Inc. General Lighting**

100 Endicott Street  
Danvers, MA 01923-3623  
Tel: (978) 777-1900  
Fax: (978) 750-2152

- Consumer lighting products
- Industrial and commercial lighting products
- Lighting maintenance and energy-saving lighting retrofits

#### **OSRAM SYLVANIA Inc. Research & Development**

71 Cherry Hill Drive  
Beverly, MA 01915-1068  
Tel: (978) 777-1900  
Fax: (978) 750-1797

- Fundamental lighting research and testing

#### **OSRAM SYLVANIA Inc. Specialty Lighting Automotive**

275 West Main Street  
Hillsboro, NH 03244-5233  
Tel: (603) 464-5533  
Fax: (603) 464-0259

- Aftermarket automotive lighting products
- OEM automotive lighting products

#### **OSRAM SYLVANIA Inc. Specialty Lighting Display/Optic**

129 Portsmouth Avenue  
Exeter, NH 03833-2105  
Tel: (603) 772-4331  
Fax: (603) 772-1072

- Light sources for:
  - Cinema film projection
  - Entertainment
  - Industrial
  - Information display
  - Medical
  - Scientific
  - Semiconductor applications

# BSH Home Appliances Corporation

## Corporate Office

1901 Main Street  
Irvine, CA 92614

Tel: (949) 440-7100

## Cross-Sector

siemens-home.com

BSH Home Appliances Corporation is a wholly-owned subsidiary of Robert Bosch GmbH and Siemens AG. Founded in 1967, it is the third largest appliance manufacturer in the world. BSH is the market leader in home appliances in Germany, and number one in Europe. BSH began selling dishwashers in North America in 1991, and in 1997, opened a state-of-the-art factory in New Bern, North Carolina.

### Location

#### **BSH Home Appliances Corporation**

1901 Main Street  
Irvine, CA 92614  
Tel: (949) 440-7100

### Summary

- Accounting
- Brand marketing
- Customer service
- Human resources
- Information technology
- Logistics
- Order entry
- Product marketing
- Sales
- Technical support

#### **BSH Home Appliances Corporation**

100 Bosch Boulevard  
New Bern, NC 28562-6924  
Tel: (252) 636-4454  
Fax: (252) 636-4433

- Built-in ovens
- Ceramic cooktops
- Cooker hoods
- Dishwashers
- Freestanding ranges

#### **BSH Home Appliances Corporation**

130 Memorial Drive  
La Follette, TN 37766-4070  
Tel: (423) 562-4948  
Fax: (423) 562-1513

- Professional series products

Notes:



To download a PDF of this brochure or to view online:  
[usa.siemens.com/answers-for-america](http://usa.siemens.com/answers-for-america)

To order printed copies, contact:  
[intra.sc.siemens.com/afaorderform.pdf](http://intra.sc.siemens.com/afaorderform.pdf)